

Pecyn Dogfennau



Mark James LLM, DPA, DCA
Prif Weithredwr,
Chief Executive,
Neuadd y Sir, Caerfyrddin. SA31 1JP
County Hall, Carmarthen. SA31 1JP

DYDD MERCHER, 7FED MAWRTH, 2018

AT: HOLL AELODAU'R PWYLLGOR CRAFFU ADDYSG A PHLANT

YR WYF DRWY HYN YN EICH GALW I FYNYCHU CYFARFOD O'R **PWYLLGOR CRAFFU ADDYSG A PHLANT** SYDD I'W GYNNAL YN Y SIAMBR, NEUADD Y SIR, CAERFYRDDIN AM **10.00 A.M.** AR **DDYDD MERCHER, 14EG MAWRTH, 2018** ER MWYN CYFLAWNI'R MATERION A AMLINELLIR AR YR AGENDA ATODEDIG.

Mark James DYB

PRIF WEITHREDWR



AILGYLCHWCH OS GWELWCH YN DDA

Swyddog Democrataidd:	Michelle Evans Thomas
Ffôn (Llinell Uniongyrchol):	01267 224470
E-bost:	MEEvansThomas@sirgar.gov.uk
Cyf:	AD016-001

PWYLLGOR CRAFFU ADDYSG A PHLANT

**14 AELOD O'R CYNGOR, 2 AELOD ANETHOLEDIG SYDD Â PHLEIDLAIS
A 3 RHIANT-LYWODRAETHWYR ETHOLEDIG SYDD Â PHLEIDLAIS**

GRŴP PLAID CYMRU – 7 AELOD

- | | | |
|----|------------|--------------------------|
| 1. | Cynghorydd | Liam Bowen |
| 2. | Cynghorydd | Kim Broom |
| 3. | Cynghorydd | Betsan Jones |
| 4. | Cynghorydd | Jean Lewis |
| 5. | Cynghorydd | Darren Price (Cadeirydd) |
| 6. | Cynghorydd | Emlyn Schiavone |
| 7. | Cynghorydd | Dorian Williams |

GRŴP LLAFUR – 4 AELOD

- | | | |
|----|------------|---------------|
| 1. | Cynghorydd | Dot Jones |
| 2. | Cynghorydd | Gary Jones |
| 3. | Cynghorydd | Shahana Najmi |
| 4. | Cynghorydd | Bill Thomas |

GRŴP ANNIBYNNOL – 2 AELOD

- | | | |
|----|------------|------------------------------|
| 1. | Cynghorydd | Ieuan Wyn Davies |
| 2. | Cynghorydd | Edward Thomas (Is-Cadeirydd) |

HEB GYSYLLTIAD PLEIDIOL – 1 AELOD

- | | | |
|----|------------|--------------|
| 1. | Cynghorydd | John Jenkins |
|----|------------|--------------|

AELODAU ANETHOLEDIG SYDD A PHLEIDLAIS (2)

- | | | |
|----|------------------------|-----------------------------|
| 1. | Mrs. V. Kenny | Yr Eglwys Gatholig Rufeinig |
| 2. | Mrs. J. Voyle Williams | Yr Eglwys yng Nghymru |

RHIANT LYWODRAETHWYR ETHOLEDIG SYDD Â PHLEIDLAIS (3)

Cyfnod yn y swydd yn dod i ben ar y 31/03/2018

- | | | |
|----|-----------------|-----------------------|
| 1. | Mrs. K. Hill | Ardal 1 – Dinefwr |
| 2. | Mrs. A. Pickles | Ardal 2 – Caerfyrddin |
| 3. | Lle Gwag | Ardal 3 - Llanelli |

AGENDA

1. YMDDIHEURIADAU AM ABSENOLDEB.
2. DATGANIADAU O FUDDIANNAU PERSONOL.
3. DATGAN CHWIPIAID PLAID SYDD WEDI EU GWAHARDD.
4. CWESTIYNAU GAN Y CYHOEDD (NID OEDD DIM WEDI DOD I LAW).
5. ADRODDIAD MONITRO CYLLIDEB CYFALAF A REFENIW 2017/18. 5 - 20
6. ADRODDIAD CATEGOREIDDIO CENEDLAETHOL LLYWODRAETH CYMRU (DEILLIANNAU SIR GAR) 2017/18. 21 - 38
7. ADDYSG DDEWISIOL YN Y CARTREF - PAPUR BRIFFIO MAWRTH 2018. 39 - 54
8. GRWP GORCHWYL A GORFFEN Y PWYLLGOR CRAFFU ADDYSG A PHLANT - DOGFEN CYNLLUNIO A CHWMPASU. 55 - 62
9. EGLURHAD AM BEIDIO Â CHYFLWYNO ADRODDIADAU CRAFFU. 63 - 66
10. EITEMAU AR GYFER Y DYFODOL. 67 - 68
11. LLOFNODI FEL COFNOD CYWIR COFNODION CYFARFOD Y PWYLLGOR A GYNHALIWDYD AR 25AIN IONAWR, 2018. 69 - 76

Mae'r dudalen hon yn wag yn fwriadol

PWYLLGOR CRAFFU ADDYSG A PHLANT

14^{eg} MAWRTH 2018

Adroddiad Monitro Cyllideb Cyfalaf a Refeniw 2017/18

Ystyried y materion canlynol a chyflwyno sylwadau arnynt:

- Bod y Pwyllgor Craffu yn derbyn yr adroddiad monitro'r gyllideb ar gyfer y Gwasanaethau Addysg a Phlant, ac yn ystyried y sefyllfa cyllidebol.

Rhesymau:

- I ddatgan sefyllfa bresennol y gyllideb i'r Pwyllgor ar y 31^{ain} Rhagfyr 2017, ynglyn â 2017-18.

**Angen cyfeirio'r mater at y Bwrdd Gweithredol er mwyn gwneud penderfyniad:
NAC OES**

Aelodau'r Bwrdd Gweithredol sy'n gyfrifol am y Portffolio:

- Cyng. Glynog Davies (Addysg a Phlant)
- Cyng. David Jenkins (Adnoddau)

Y Gyfarwyddiaeth: Gwasanaethau Corfforaethol Enw Cyfarwyddwr y Gwasanaeth: Chris Moore Awdur yr adroddiad: Chris Moore	Swydd: Cyfarwyddwr y Gwasanaethau Corfforaethol	Rhif Ffôn / Cyfeiriad E-bost: 01267 224120 CMoore@sirgar.gov.uk
--	---	--

EXECUTIVE SUMMARY

**EDUCATION & CHILDREN SCRUTINY
COMMITTEE**

14th MARCH 2018

**Revenue & Capital Budget
Monitoring Report 2017/18**

The Financial Monitoring Report is presented as follows :

Revenue Budgets

Appendix A

Summary position for the Education & Children Scrutiny Committee. Services within the Education & Children Scrutiny remit are forecasting a £516k overspend.

Appendix B

Report on Main Variances on agreed budgets.

Appendix C

Detail variances for information purposes only.

Capital Budgets

Appendix D

Details the main variances, which shows a forecasted net spend of £17,072k compared with a working net budget of £15,068k giving a £2,004k variance. The variance (negative slippage) will be incorporated into future year's budgets.

Appendix E

Detail variances on all schemes for information purposes only.

DETAILED REPORT ATTACHED?

***YES – A list of the main variances is
attached to this report***

IMPLICATIONS

I confirm that other than those implications which have been agreed with the appropriate Directors / Heads of Service and are referred to in detail below, there are no other implications associated with this report.

Signed: **Chris Moore** Director of Corporate Services

Policy, Crime & Disorder and Equalities	Legal	Finance	ICT	Risk Management Issues	Staffing Implications	Physical Assets
NONE	NONE	YES	NONE	NONE	NONE	NONE

3. Finance

Revenue – The Education & Children Service is projecting that it will be over its approved budget by £516k.

Capital – The capital programme shows a net variance of £2,004k against the 2017/18 approved budget.

CONSULTATIONS

I confirm that the appropriate consultations have taken in place and the outcomes are as detailed below:

Signed: **Chris Moore** Director of Corporate Services

1. Local Member(s) – N/A
2. Community / Town Council – N/A
3. Relevant Partners – N/A
4. Staff Side Representatives and other Organisations – N/A

Section 100D Local Government Act, 1972 – Access to Information
List of Background Papers used in the preparation of this report:

THESE ARE DETAILED BELOW:

Title of Document	File Ref No. / Locations that the papers are available for public inspection
2017/18 Budget	Corporate Services Department, County Hall, Carmarthen

Mae'r dudalen hon yn wag yn fwriadol

Education & Children's Services Scrutiny Report
Budget Monitoring as at 31st December 2017 - Summary

Division	Working Budget				Forecasted				Dec 2017 Forecasted Variance for Year £'000	Oct 2017 Forecasted Variance for Year £'000
	Expenditure £'000	Income £'000	Net non- controllable £'000	Net £'000	Expenditure £'000	Income £'000	Net non- controllable £'000	Net £'000		
Director & Strategic Management	888	0	-148	739	746	0	-148	598	-142	-138
Education Services Division	117,447	-1,701	19,152	134,898	118,244	-1,866	19,152	135,530	632	681
Strategic Development	9,273	-7,505	881	2,649	9,096	-7,342	881	2,634	-14	-11
School Improvement	4,143	-1,842	504	2,805	5,033	-2,718	504	2,819	14	37
Learner Programmes	4,973	-3,867	384	1,490	5,149	-4,001	384	1,532	43	79
Children's Services	22,924	-6,585	2,103	18,443	23,568	-7,245	2,103	18,426	-16	266
GRAND TOTAL	159,648	-21,500	22,876	161,024	161,836	-23,172	22,876	161,540	516	913

Education & Children's Services Scrutiny Report

Budget Monitoring as at 31st December 2017 - Main Variances

Tudalen 10

Division	Working Budget		Forecasted		Dec 2017	Notes	Oct 2017
	Expenditure £'000	Income £'000	Expenditure £'000	Income £'000	Forecasted Variance for Year £'000		Forecasted Variance for Year £'000
Director & Strategic Management							
Director & Management Team	888	0	746	0	-142	Part year vacant post. Increased budget (£100k) relating to transfers from other areas of the department in readiness to meet a departmental efficiency proposal in 2018-19.	-138
Education Services Division							
School Redundancy & EVR	1,838	0	2,331	0	494	Budget utilised on existing commitments. Schools are supported and challenged on staffing structure proposals.	422
School Modernisation	93	-5	263	-33	143	Maintenance and other premises costs relating to closed schools £100k. Transport recharges outside of Transport Policy for former pupils of closed schools £49k partly offset by additional income -£6k. NNDR Valuation Office have recently revised the treatment of closed schools.	376
Early Years Non-Maintained Provision	469	0	372	0	-97	Reduced take-up of 10 hours per week free entitlement for 3 year olds in non-maintained settings.	-115
Special Educational Needs	2,908	-1,484	3,111	-1,515	173	Additional statementing costs within smaller schools £80k. Recent agreement and settlement of outstanding costs for four out of county complex individual cases £93k.	29
Education Other Than At School (EOTAS)	1,974	-212	2,009	-296	-50	Part year vacant posts	10
Sensory Impairment	362	0	348	0	-14	Part year vacant posts	-17
Educational Psychology	898	0	900	-23	-21	Part year vacant posts	-29
Strategic Development							
Business Support	448	0	417	0	-31	Part year vacant posts	-24
Participation	89	0	72	0	-16	Part year vacant posts	-10
School Meals & Primary Free Breakfast Services	7,959	-7,143	7,835	-6,982	37	Sales lower than projected April - December, possibly due to price increase.	28
School Improvement							
National Model for School Improvement	1,154	-56	1,246	-177	-29	Challenge advisor part year vacancy	-21
Welsh Language Support	459	-176	492	-169	40	Contingency of £65k relating to potential repayment to Swansea University relating to previous year which has been referred to Legal Services, offset by part year vacant posts -£25k.	54

Education & Children's Services Scrutiny Report

Budget Monitoring as at 31st December 2017 - Main Variances

Division	Working Budget		Forecasted		Dec 2017 Forecasted Variance for Year £'000	Notes	Oct 2017 Forecasted Variance for Year £'000
	Expenditure £'000	Income £'000	Expenditure £'000	Income £'000			
Learner Programmes							
Music Services for Schools	1,083	-984	1,262	-973	190	Reduced take-up of school Service Level Agreements (SLA), due to school budgetary pressures.	185
Families First Grant (Youth)	674	-654	661	-654	-13	Part year vacant posts	-2
Behaviour Management	141	0	73	0	-68	Part year vacant post for Behaviour and Wellbeing manager	-56
Youth Offending & Prevention Service	1,625	-785	1,596	-822	-66	Proceeds from sale of vehicles and additional staffing recharge to Youth Justice Board grant	-47
Children's Services							
Commissioning and Social Work	6,474	-20	6,801	-418	-71	High Legal costs projected due to a high number of cases £158k. This is offset by secondment and part year vacancy savings -£172k and utilisation of additional grant and recharge income to support other pressures -£57k.	-90
Corporate Parenting & Leaving Care	1,263	-418	1,292	-513	-66	Utilisation of grant, enabling core budget to support other pressures	0
Fostering Services & Support	3,696	0	3,776	0	80	The taxi's budget faces ongoing pressure £20k due to the high number of placement moves, some away from school areas. The Fostering Support Team have increased transport costs, boarding out payments and residence orders (even though CCC current rates are set at the minimum allowed by Welsh Government) £249k. This is offset by part year vacancies in the Fostering Team, -£106k and additional grant -£70k savings on recruitment costs -£13k.	147
Out of County Placements (CS)	739	-54	774	-3	85	More use of independent fostering agencies that are more expensive to use due to a lack of in house foster placements including 3 young people being accommodated out of county due to their complex needs requiring 24 hour support.	177
Residential and Respite Units	937	-55	896	0	13	Additional staffing levels required to meet the needs of young people at the units	34
Short Breaks and Direct Payments	519	-30	483	-40	-46	Direct Payments has received extra demand due to the lack of summer club provision £7k, offset by savings of £53k as a result of additional funding from the closure of the Giant Steps provision	6
Children's/Family Centres and Playgroups	160	-4	214	-32	26	Fewer referrals than anticipated resulting in reduced grant funding	15
Aids & Adaptions	13	0	24	0	11	Additional demand for appliances	12
Family Aide Services	212	0	178	0	-34	Part year vacancies	-32
Other Family Services incl Young Carers and ASD	422	-229	395	-266	-65	Utilisation of grant, enabling core budget to support other pressures	-47
Out of Hours Service	208	-64	226	-64	18	Service has been realigned and will be transferring to Adult services next financial year	0

Education & Children's Services Scrutiny Report
Budget Monitoring as at 31st December 2017 - Main Variances

Tudalen 12

Division	Working Budget		Forecasted		Dec 2017	Notes	Oct 2017
	Expenditure £'000	Income £'000	Expenditure £'000	Income £'000	Forecasted Variance for Year £'000		Forecasted Variance for Year £'000
Garreglwyd Residential Unit	541	-159	651	-217	52	Additional staffing costs to cover periods of sickness and a young person being moved in which reduces the out of county placement costs.	62
Education Welfare	409	0	418	-31	-22	Utilisation of grant, enabling core budget to support other pressures.	-40
Other Variances					6		23
Grand Total					516		913

Education & Children's Services Scrutiny Report

Budget Monitoring as at 31st December 2017 - Detail Variances

Division	Working Budget				Forecasted				Dec 2017 Forecasted Variance for Year £'000	Notes	Oct 2017 Forecasted Variance for Year £'000
	Expenditure £'000	Income £'000	Net non- controllable £'000	Net £'000	Expenditure £'000	Income £'000	Net non- controllable £'000	Net £'000			
Director & Strategic Management											
Director & Management Team	888	0	-148	739	746	0	-148	598	-142	Part year vacant post. Increased budget (£100k) relating to transfers from other areas of the department in readiness to meet a departmental efficiency proposal in 2018-19.	-138
Director & Strategic Management Total	888	0	-148	739	746	0	-148	598	-142		-138
Education Services Division											
Schools Delegated Budget	108,746	0	0	108,746	108,746	0	0	108,746	0		0
School Expenditure not currently delegated	161	0	18,827	18,989	164	2	18,827	18,994	5		5
School Redundancy & EVR	1,838	0	6	1,843	2,331	0	6	2,337	494	Budget utilised on existing commitments. Schools are supported and challenged on staffing structure proposals.	422
School Modernisation	93	-5	50	138	263	-33	50	281	143	Maintenance and other premises costs relating to closed schools £100k. Transport recharges outside of Transport Policy for former pupils of closed schools £49k partly offset by additional income -£6k. NNDR Valuation Office have recently revised the treatment of closed schools.	376
Early Years Non-Maintained Provision	469	0	21	490	372	0	21	392	-97	Reduced take-up of 10 hours per week free entitlement for 3 year olds in non-maintained settings.	-115
Special Educational Needs	2,908	-1,484	135	1,559	3,111	-1,515	135	1,731	173	Additional statementing costs within smaller schools £80k. Recent agreement and settlement of outstanding costs for four out of county complex individual cases £93k.	29
Education Other Than At School (EOTAS)	1,974	-212	61	1,824	2,009	-296	61	1,774	-50	Part year vacant posts	10
Sensory Impairment	362	0	9	371	348	0	9	357	-14	Part year vacant posts	-17
Educational Psychology	898	0	42	940	900	-23	42	919	-21	Part year vacant posts	-29
Education Services Division Total	117,447	-1,701	19,152	134,898	118,244	-1,866	19,152	135,530	632		681
Strategic Development											
School Milk & Uniform Grants	281	-280	12	13	278	-277	12	13	-0		-0
Information & Improvement	497	-83	114	529	493	-83	114	524	-4		-6
Business Support	448	0	144	591	417	0	144	561	-31	Part year vacant posts	-24
Participation	89	0	0	89	72	0	0	72	-16	Part year vacant posts	-10
School Meals & Primary Free Breakfast Services	7,959	-7,143	611	1,427	7,835	-6,982	611	1,464	37	Sales lower than projected April - December, possibly due to price increase.	28
Strategic Development Total	9,273	-7,505	881	2,649	9,096	-7,342	881	2,634	-14		-11

Education & Children's Services Scrutiny Report

Budget Monitoring as at 31st December 2017 - Detail Variances

Tudalen 14

Division	Working Budget				Forecasted				Dec 2017	Notes	Oct 2017
	Expenditure £'000	Income £'000	Net non- controllable £'000	Net £'000	Expenditure £'000	Income £'000	Net non- controllable £'000	Net £'000	Forecasted Variance for Year £'000		Forecasted Variance for Year £'000
School Improvement											
School Effectiveness Support Services	302	-59	308	551	308	-62	308	553	3		4
National Model for School Improvement	1,154	-56	0	1,098	1,246	-177	0	1,069	-29	Challenge advisor part year vacancy	-21
Welsh Language Support	459	-176	64	347	492	-169	64	387	40	Contingency of £65k relating to potential repayment to Swansea University relating to previous year which has been referred to Legal Services, offset by part year vacant posts - £25k.	54
Education Improvement Grant	1,845	-1,169	0	677	2,603	-1,926	0	677	0		0
Other School Grants incl PDG	383	-382	133	133	384	-383	133	133	0		-0
School Improvement Total	4,143	-1,842	504	2,805	5,033	-2,718	504	2,819	14		37
Learner Programmes											
Post 16 Funding	148	-148	0	0	152	-152	0	0	-0		-0
Music Services for Schools	1,083	-984	10	109	1,262	-973	10	299	190	Reduced take-up of school Service Level Agreements (SLA), due to school budgetary pressures.	185
Families First Grant (Youth)	674	-654	33	53	661	-654	33	40	-13	Part year vacant posts	-2
Behaviour Management	141	0	0	141	73	0	0	73	-68	Part year vacant post for Behaviour and Wellbeing manager	-56
Youth Offending & Prevention Service	1,625	-785	195	1,034	1,596	-822	195	968	-66	Proceeds from sale of vehicles and additional staffing recharge to Youth Justice Board grant	-47
Adult & Community Learning	420	-416	146	150	414	-410	146	150	-0		-1
Cam Nesa	0	0	0	0	82	-82	0	-0	-0		0
Cynnydd	881	-880	0	2	910	-909	0	2	0		0
Learner Programmes Total	4,973	-3,867	384	1,490	5,149	-4,001	384	1,532	43		79
Children's Services											
Commissioning and Social Work	6,474	-20	1,451	7,905	6,801	-418	1,451	7,834	-71	High Legal costs projected due to a high number of cases £158k. This is offset by secondment and part year vacancy savings -£172k and utilisation of additional grant and recharge income to support other pressures -£57k.	-90
Corporate Parenting & Leaving Care	1,263	-418	50	895	1,292	-513	50	829	-66	Utilisation of grant, enabling core budget to support other pressures	-0
Fostering Services & Support	3,696	0	91	3,787	3,776	0	91	3,867	80	The taxi's budget faces ongoing pressure £20k due to the high number of placement moves, some away from school areas. The Fostering Support Team have increased transport costs, boarding out payments and residence orders (even though CCC current rates are set at the minimum allowed by Welsh Government) £249k. This is offset by part year vacancies in the Fostering Team, -£106k and additional grant -£70k savings on recruitment costs -£13k.	147
Adoption Services	524	-56	31	498	606	-147	31	489	-9		8

Education & Children's Services Scrutiny Report
Budget Monitoring as at 31st December 2017 - Detail Variances

Division	Working Budget				Forecasted				Dec 2017	Notes	Oct 2017
	Expenditure £'000	Income £'000	Net non- controllable £'000	Net £'000	Expenditure £'000	Income £'000	Net non- controllable £'000	Net £'000	Forecasted Variance for Year £'000		Forecasted Variance for Year £'000
Out of County Placements (CS)	739	-54	3	689	774	-3	3	773	85	More use of independent fostering agencies that are more expensive to use due to a lack of in house foster placements including 3 young people being accommodated out of county due to their complex needs requiring 24 hour support.	177
Residential and Respite Units	937	-55	55	938	896	0	55	951	13	Additional staffing levels required to meet the needs of young people at the units	34
Childcare	423	-140	36	319	430	-147	36	319	-0		-0
Short Breaks and Direct Payments	519	-30	9	498	483	-40	9	452	-46	Direct Payments has received extra demand due to the lack of summer club provision £7k, offset by savings of £53k as a result of additional funding from the closure of the Giant Steps provision	6
Children's/Family Centres and Playgroups	160	-4	22	177	214	-32	22	204	26	Fewer referrals than anticipated resulting in reduced grant funding	15
Flying Start Grant	3,606	-3,601	63	69	3,616	-3,601	63	79	10		11
Families First Grant	1,885	-1,680	76	282	1,794	-1,589	76	282	0		1
Aids & Adaptions	13	0	1	13	24	0	1	25	11	Additional demand for appliances	12
Family Aide Services	212	0	26	238	178	0	26	204	-34	Part year vacancies	-32
Other Family Services incl Young Carers and ASD	422	-229	7	201	395	-266	7	136	-65	Utilisation of grant, enabling core budget to support other pressures	-47
Out of Hours Service	208	-64	7	151	226	-64	7	169	18	Service has been realigned and will be transferring to Adult services next financial year	0
Children's Services Mgt & Support (incl Care First)	892	-76	114	930	995	-178	114	932	2		2
Garreglwyd Residential Unit	541	-159	22	403	651	-217	22	455	52	Additional staffing costs to cover periods of sickness and a young person being moved in which reduces the out of county placement costs.	62
Education Welfare	409	0	39	449	418	-31	39	427	-22	Utilisation of grant, enabling core budget to support other pressures.	-40
Children's Services Total	22,924	-6,585	2,103	18,443	23,568	-7,245	2,103	18,426	-16		266
TOTAL FOR EDUCATION & CHILDREN'S SERVICES	159,648	-21,500	22,876	161,024	161,836	-23,172	22,876	161,540	516		913

Mae'r dudalen hon yn wag yn fwiadol

Mae'r dudalen hon yn wag yn fwiadol

Education & Children Services

Capital Budget Monitoring - Scrutiny Report for December 2017 - Detailed variances

Scheme	Target Date for Completion	Working Budget			Forecasted		
		Expenditure £'000	Income £'000	Net £'000	Expenditure £'000	Income £'000	Net £'000
Education DDA Act Works	Ongoing	151	0	151	151	0	151
Catering	Completed	30	0	30	30	0	30
MEP External Funding Income	Ongoing	0	-9,130	-9,130	0	-7,486	-7,486
MEP - Tranche 2 & 3		738	0	738	933	0	933
Ffwrnes - New Two Form Entry School	Completed	0	0	0	11	0	11
Dinefwr Project - Dyffryn Aman	Completed	131	0	131	280	0	280
Dinefwr Project - Maes Y Gwendraeth	Completed	133	0	133	168	0	168
Dinefwr Project - Ysgol Bro Dinefwr	Completed	474	0	474	474	0	474
MEP - Band A Projects		22,982	-570	22,412	21,811	0	21,811
Ysgol Pen Rhos CP School - New Two Form Entry	Sep-19	4,299	0	4,299	4,496	0	4,496
Ysgol Carreg Hirfaen - Mobile & New School	Completed	75	0	75	100	0	100
Llangadog - Major Redevelopment	Sep-19	1,955	0	1,955	500	0	500
Burry Port Schools Development	Completed	191	0	191	110	0	110
Ysgol Trimsaran - New School Building	Oct-17	1,813	0	1,813	3,200	0	3,200
Ysgol Y Strade - Phase 1	Completed	30	0	30	1	0	1
Llandeilo Primary	Ongoing	203	0	203	50	0	50
Ammanford Primary	Ongoing	173	0	173	50	0	50
Parc Y Tywyn	Sep-18	6,051	0	6,051	6,051	0	6,051
Llanelli Vocational Village	Completed	132	0	132	32	0	32
Ysgol Dewi Sant - Band A	Ongoing	500	0	500	500	0	500
Gorslas - New School	Ongoing	505	0	505	505	0	505
Rhydyfodors - Refurbishment/Re-configuration	Ongoing	568	0	568	0	0	0
Laugethorpe VCP Works	Ongoing	283	0	283	0	0	0
Pontyberem CP - Refurbishment/Re-configuration	Jan-19	1,088	0	1,088	1,500	0	1,500
Cardarvan West New School - Phase 1	Ongoing	570	-570	0	570	0	570
Rhydyfodors Relocation	Ongoing	505	0	505	100	0	100
Ysgol Coedcae - Phase 1	Completed	1,583	0	1,583	1,583	0	1,583

Variance for Year £'000	Comment
0	
0	
1,644	Grant within year reduced due to schemes not progressing as envisaged, no overall impact on grant at project end.
195	
11	
149	Issues with playing fields being discussed with contractor.
35	
0	
-601	
197	Scheme progressing well - re-profile required, no overall overspend
25	
-1,455	Delay with planning permission, therefore delayed start on site.
-81	No overall scheme variance. Retention 2018-19
1,387	Ahead of schedule, re-profile required - no overall overspend.
-29	
-153	Timeline slipped - re-profile required.
-123	Timeline slipped - re-profile required.
0	
-100	Scheme saving.
0	
0	
-568	Scheme development delayed pending outcome of Behavioural Services Review.
-283	Scheme delayed pending resolution of land issues.
412	Ahead of schedule, re-profile required - no overall overspend.
570	Purchase of school site to be funded from future S106 payments.
-405	Delay due to scheme development issues.
0	

Education & Children Services
Capital Budget Monitoring - Scrutiny Report for December 2017 - Detailed variances

		Working Budget			Forecasted		
Scheme	Target Date for Completion	Expenditure £'000	Income £'000	Net £'000	Expenditure £'000	Income £'000	Net £'000
St John Lloyd	Sep-18	2,458	0	2,458	2,463	0	2,463
MEP - Future Projects	Ongoing	329	0	329	1,071	0	1,071
MEP - Other Projects	Mar-18	478	0	478	502	0	502
Misc Education Projects (School Funded)	Mar-18	21	0	21	21	0	21
Flying Start Capital Expansion Programme	Mar-18	120	-81	39	120	-81	39
NET BUDGET		24,849	-9,781	15,068	24,639	-7,567	17,072

Variance for Year £'000	Comment
5	
742	Design costs and some land purchase accelerated on various Band B schemes in order to take full advantage of grant funding in 2018/19.
24	
0	
0	
2,004	

PWYLLGOR CRAFFU ADDYSG A PHLANT

14^{ain} O FAWRTH 2018

Adroddiad Categoriaddio Cenedlaethol Ll. Cymru Deilliannau Sir Gâr 2017 - 2018

Ystyried y materion canlynol a chyflwyno sylwadau arnynt:

- Nodi cynnwys yr adroddiad a'r materion allweddol sy'n codi mewn perthynas ag anghenion gwella a chefnogaeth ysgolion yn dilyn prosesau categoriaddio cenedlaethol ar gyfer 2017-18.

Rhesymau:

- Er mwyn i'r aelodau o'r Pwyllgor Craffu allu cyflawni eu swyddogaeth allweddol o ran gwelliant a chynnydd ar draws ysgolion y sir a chynorthwyo i bennu blaenoriaethau i'r dyfodol o ganlyniad i'r materion sy'n dellio o'r adroddiad.

**Angen cyfeirio'r mater at y Bwrdd Gweithredol er mwyn gwneud penderfyniad:
NAC OES**

Aelod y Bwrdd Gweithredol sy'n gyfrifol am y Portffolio:
Cyng. Glynog Davies

Y Gyfarwyddiaeth: Addysg a Phlant	Swyddi:	Rhifau Ffôn / Cyfeiriadau E-bost:
Enw Pennaeth y Gwasanaeth: Andi Morgan	Pennaeth Gwasanaethau Addysg	Telephone: 01267 246645 Email: andimorgan@sirgar.gov.uk
Awdur yr adroddiad: Elin Forsyth	Pennaeth Effeithiolrwydd Ysgolion/Prif Gynghorydd Her	Telephone: 01267 246646 Email: EMForsyth@sirgar.gov.uk

EXECUTIVE SUMMARY

EDUCATION & CHILDREN
SCRUTINY COMMITTEE
14th MARCH 2018

WG National Categorisation Report
(Carmarthenshire Outcomes)
2017 - 2018

Introduced in 2014, the National School Categorisation System places schools into one of four colour-coded support categories to demonstrate the level of support they need - green, yellow, amber and red. Each 'Support Category' denotes a varying amount of tailored, bespoke support for the individual school e.g. Green schools receive up to 4 days support with Red schools receiving up to 25 days of support.

The National School Categorisation System has been developed between the Welsh Government and regional consortia, of which Carmarthenshire and all Local Authorities are key partners. **The main purpose of the system is to identify, across Wales, the schools that need the most support.**

This report provides members with a detailed overview of the outcomes for the 2017-18 round of national categorisation. In addition, data is provided to demonstrate each school's national categorisation support and improvement journey since 2014.

The 2017-18 round of national categorisation has witnessed a significant and welcome change within the process with the previous 'Standards' grouping (1 to 4) for schools being deleted.

On February 1st, 2018 Cabinet Secretary for Education Kirsty Williams said:

"Last September, I announced that to further raise schools standards we would make changes to the school categorisation system following advice from the OECD. As well as taking into account a much broader range of factors about a school's ability to improve, categorisation now places more of an emphasis on discussions about how the school could improve – leading to a tailored programme of support, challenge and intervention."

Detailed report attached?

YES

IMPLICATIONS

I confirm that other than those implications which have been agreed with the appropriate Directors / Heads of Service and are referred to in detail below, there are no other implications associated with this report.

Signed: **Andi Morgan** **Head of Education Services**

Policy, Crime & Disorder and Equalities	Legal	Finance	ICT	Risk Management Issues	Staffing Implications	Physical Assets
NONE	NONE	NONE	NONE	NONE	NONE	NONE

CONSULTATIONS

I confirm that the appropriate consultations have taken in place and the outcomes are as detailed below:

Signed: **Andi Morgan** **Head of Education Services**

1. Local Member(s) – N/A
2. Community / Town Council – N/A
3. Relevant Partners – N/A
4. Staff Side Representatives and other Organisations – N/A

Section 100D Local Government Act, 1972 – Access to Information
List of Background Papers used in the preparation of this report:

THERE ARE NONE:

Title of Document	File Ref No. / Locations that the papers are available for public inspection

Mae'r dudalen hon yn wag yn fwriadol

WG National Categorisation

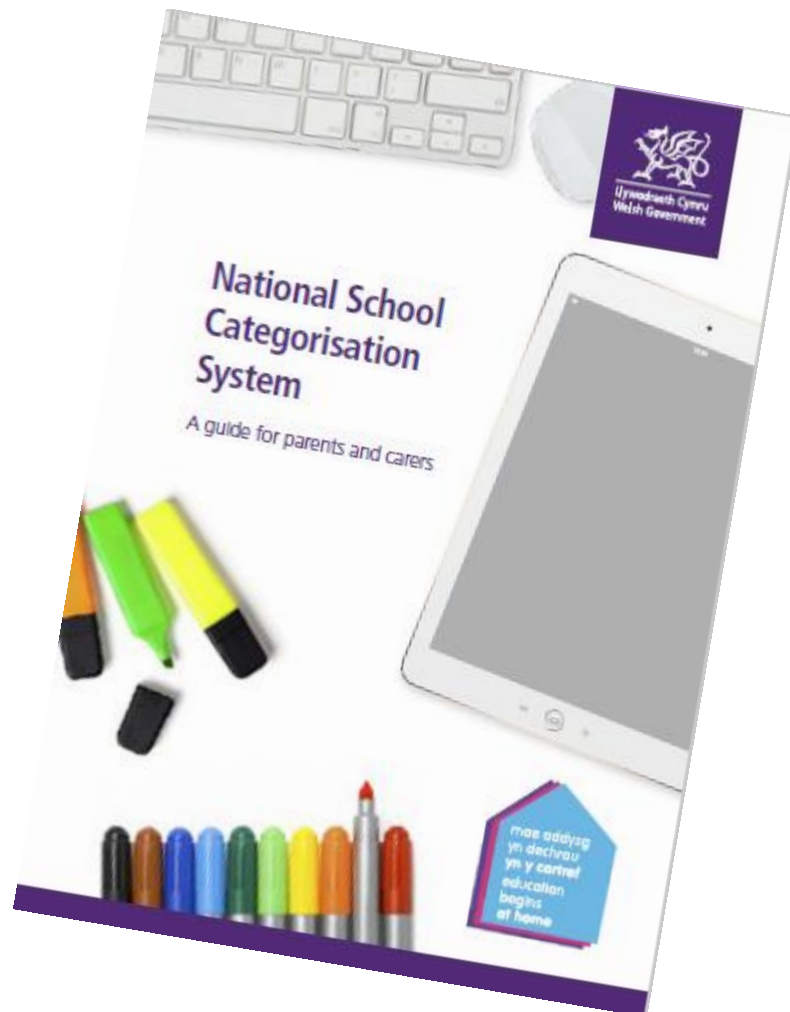
Carmarthenshire Outcomes

2017-18



Contents:

- Introduction and background - page 3
- Support Categories - Secondary Schools 2017/18 - page 5
- Support Categories - Special Schools 2017/18 - page 6
- Support Categories – Primary Schools 2017/18 - page 7
- Four Year Comparisons (Primary / Secondary) - page 10



WG National Categorisation 2017-18

Background and context:

Introduced in 2014, the National School Categorisation System places schools into one of four colour-coded support categories to demonstrate the level of support they need - green, yellow, amber and red.

The National School Categorisation System has been developed between the Welsh Government and regional consortia, of which Carmarthenshire and all Local Authorities are key partners. **The main purpose of the system is to identify, across Wales, the schools that need the most support.** The colour category of support given to a school will trigger a **tailored support programme.**

The system is based on three simple steps. It is not driven by figures and takes into account the quality of leadership and learning and teaching in our schools.

What is the three-step process and how does it work?



Outcome indicators: From this year onwards, the Welsh Government will no longer publish a standards group for schools. Instead schools will now use a broader set of performance information to evaluate how they are doing, which will take into account their local context. This will form the starting point of discussions with their regional consortium challenge advisor about their performance and area for improvement. This change has been made as a result of our work to change

accountability within our education system and make sure that schools, and their learners, are given the right support at the right time so they can fully achieve their potential.



Improvement capacity: Challenge advisers from regional consortia evaluate the school's capacity to improve, taking account of evidence about the standards achieved and the quality of leadership and learning and teaching. They will also use information from the Welsh Government to inform this evaluation and discussions with schools. Schools will be placed in one of four groups, A to D.

Schools where the judgement is an A show the greatest capacity to improve

along with the ability to support other schools. Those where the judgement is D need the most support.



Support category:

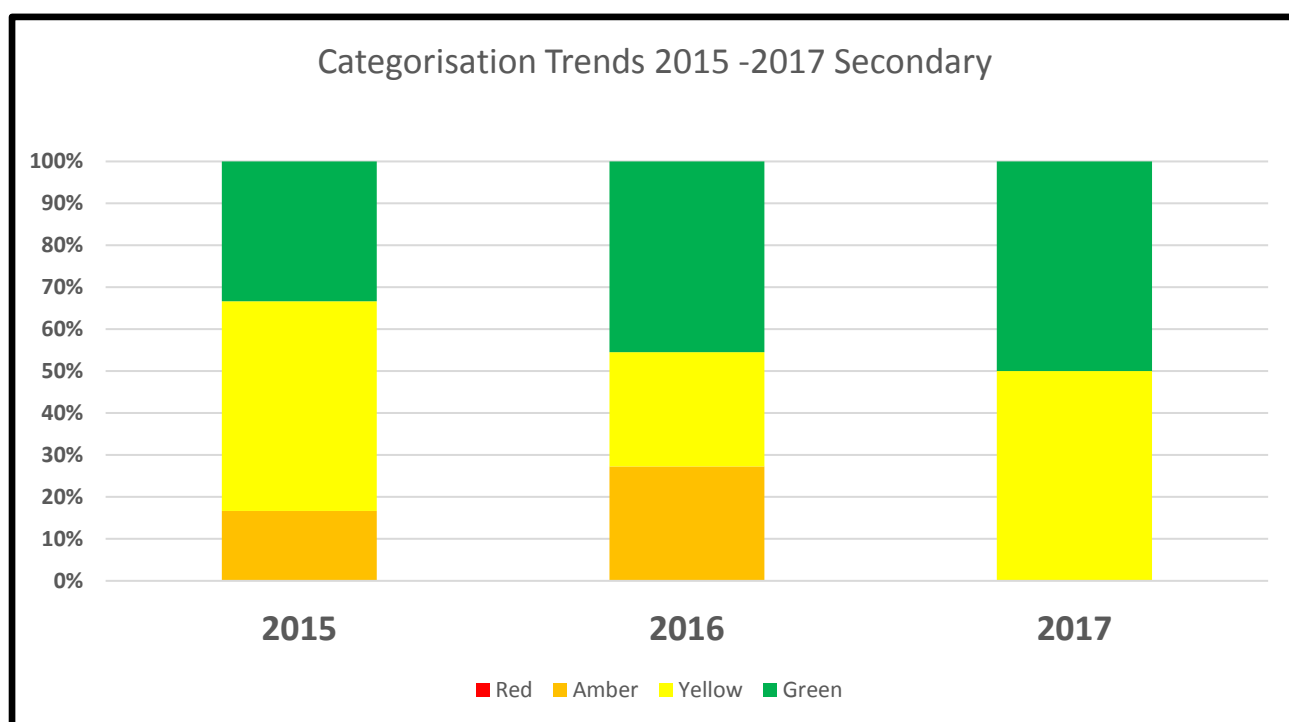
The outcomes from step two are used to decide on each school's final support category. The final categorisation is a colour code that shows the level of support a school needs – **green**, **yellow**, **amber** and **red** – to demonstrate **the level of support they need.**

Schools in the **green** category are deemed to be in need of the **least support** whilst schools in the **red** category are those identified as needing the **most intensive support.**

1. Carmarthenshire Secondary School Categorisation 2017-18:

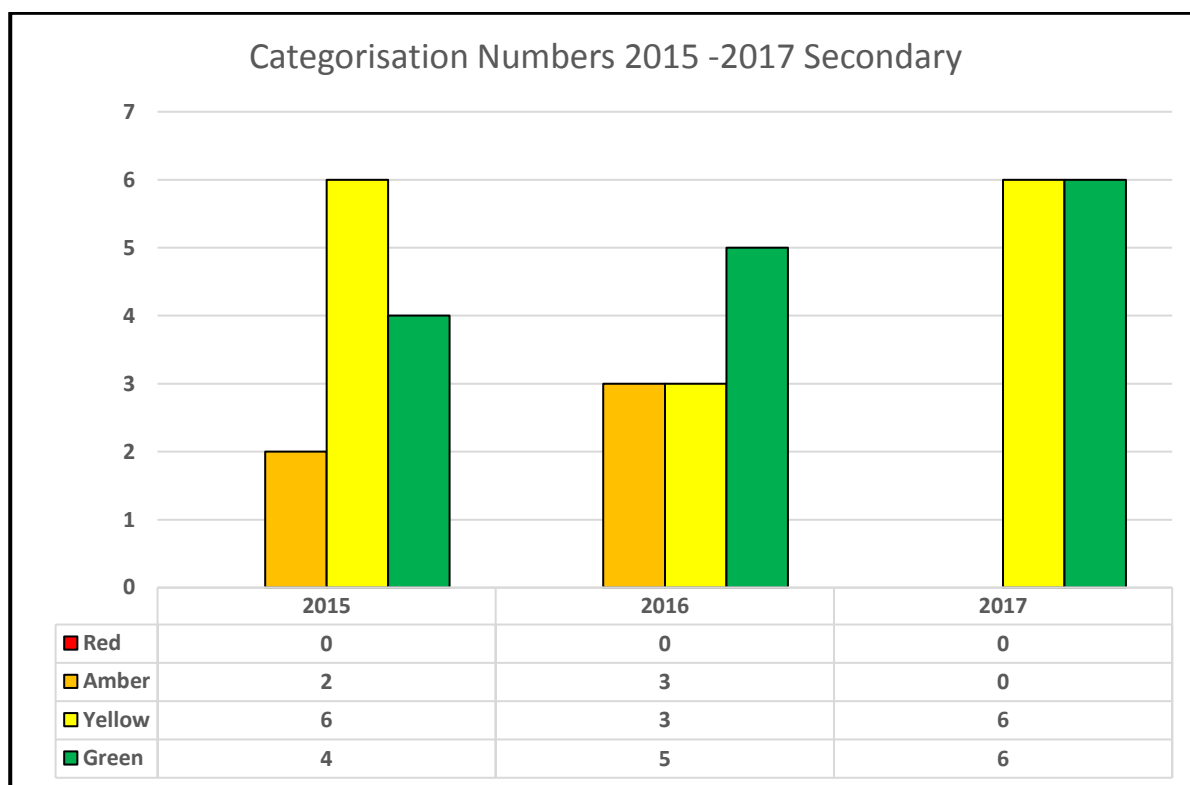
School name	Step 2 & 3 - 2016/17	Step 2 & 3 - 2017/18	%
Coedcae	Yellow – A	Green – A	50.0%
Glan-y-Mor	Green – A	Green – A	
Bro Myrddin	Green – A	Green – A	
Bryngwyn	Yellow – A	Green – A	
Bro Dinefwr	Green – A	Green – A	
Maesygwendraeth	Yellow – B	Green – A	
Dyffryn Aman	Yellow – B	Yellow – B	50.0%
Ysgol Y Strade	Green – A	Yellow – B	
St John Lloyd	Green – A	Yellow – B	
Dyffryn Taf	Yellow – B	Yellow – B	
Queen Elizabeth High	Amber – C	Yellow – B	
Emlyn	Amber – C	Yellow – B	

2. Carmarthenshire Secondary School Categorisation Trends 2015 – 17:



- All Carmarthenshire secondary schools have improved significantly and are either in the Yellow or Green Support Category for 2017
- 50.0% (6) schools have an 'A' judgement for Step 2 ('Improvement Capacity')
- 50.0% (6) schools have a 'B' judgement for Step 2 ('Improvement Capacity')

3. Carmarthenshire Secondary School Categorisation Numbers 2015 – 17:



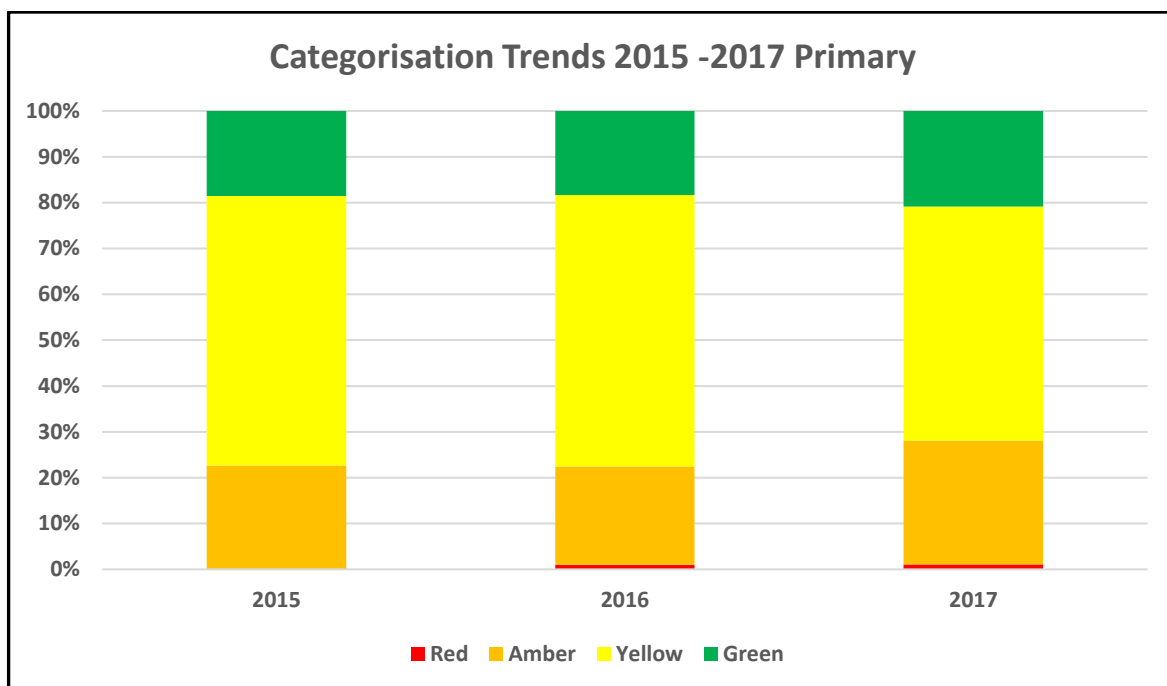
- Carmarthenshire has no secondary schools judged 'Red' or 'Amber' equating to 100% in Yellow / Green categories (Welsh average = 68.3%)
- The number of secondary schools judged 'Yellow' has doubled from last year
- The number of secondary schools judged 'Green' has increased each year

4. Carmarthenshire Special School Categorisation 2017-18:

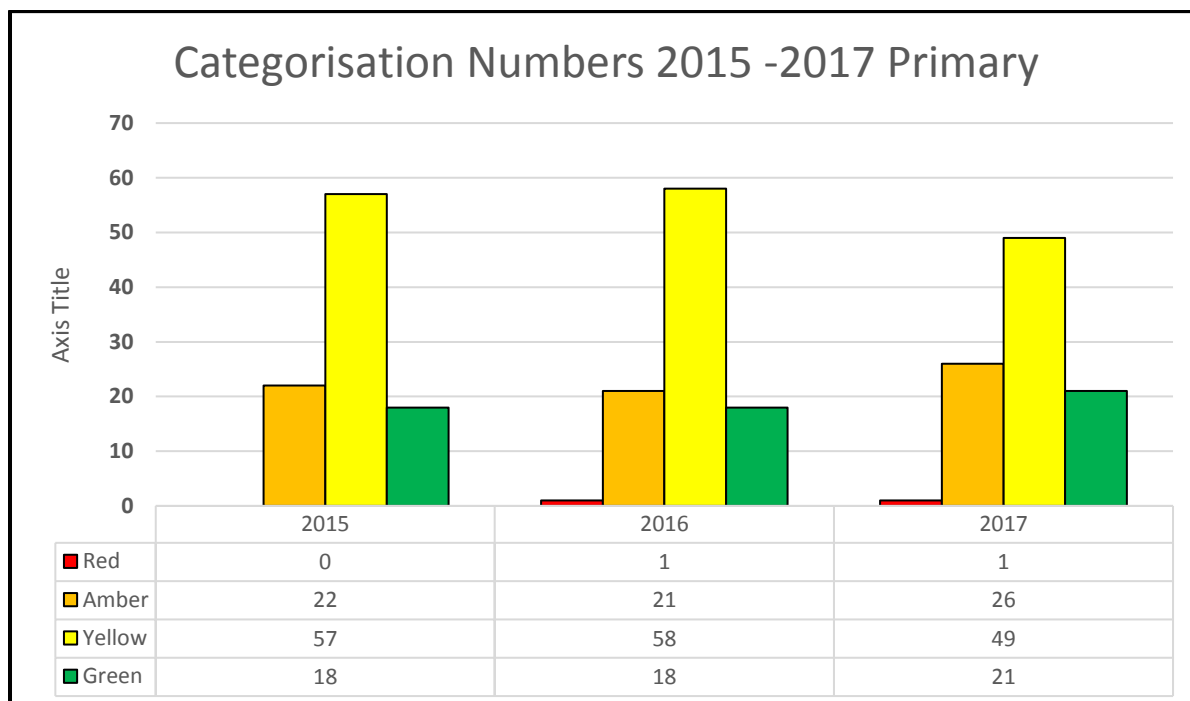
All designated Special Schools across Wales have been included in the National Categorisation model since 2016/17. To support progress and improvement for all our Carmarthenshire learners, we also implement categorisation for our Pupil Referral Units as noted below (Carmarthenshire Teaching and Learning Centre and Canolfan Bro Tywi). A comparison of the 'support category' for the two year period of data is also included within the graphic below.

School name	Step 2 & 3 - 2016/17	Step 2 & 3 - 2017/18	%
Heol Goffa	Yellow – B	Green – A	25%
Ysgol Rhydygors	Amber – B	Amber – B	50%
CSTLC	Amber – B	Amber – B	
Canolfan Bro Tywi	N/A	Red – C	25%

5. Carmarthenshire Primary School Categorisation Trends 2015 – 17:



6. Carmarthenshire Primary School Categorisation Numbers 2015 – 17:



- There are 21 schools in the Green Support Category, compared with 18 in 2015 and 2016
- All Green Support Category schools are judged 'A' for Improvement Capacity
- Overall, 70 of our primary schools are judged Green or Yellow (72% of schools)
- The number of primary schools judged 'Amber' has risen by 5
- The number of 'Red' schools remains significantly low with only 1 school currently judged to be in need of this level of support

7. Carmarthenshire Primary School Categorisation 2017-18:

Green Support Category Schools (21):

School	Step 2 & 3	School	Step 2 & 3
Saron	Green – A	Swiss Valley	Green – A
Parcyrhun	Green – A	Nantgaredig	Green – A
Johnstown	Green – A	Pembrey	Green – A
Ysgol Y Dderwen	Green – A	St Mary's, Llanelli	Green – A
Llangennech	Green – A	Llangunnor	Green – A
Mynyddygarreg	Green – A	Penygroes	Green – A
Hendy	Green – A	Trimsaran	Green – A
Bynea	Green – A	Ysgol Y Felin	Green – A
Brynamman	Green – A	Burry Port	Green – A
Richmond Park	Green – A	Llandeilo	Green – A
Penboyr	Green – A		

Yellow Support Category Schools (49):

School	Step 2 & 3	School	Step 2 & 3
Cefneithin	Yellow - B	Teilo Sant	Yellow – B
Parcetywyn	Yellow – A	Drefach	Yellow - B
Llechyfedach	Yellow – B	Beca	Yellow – B
Y Tymbl	Yellow - B	Llandybie	Yellow – B
Gorslas	Yellow – B	Llanybydder	Yellow – B
Cross Hands	Yellow – B	Penrhos	Yellow – B
Llangain	Yellow – B	Halfway	Yellow – B
Peniel	Yellow – B	Pwll	Yellow – B
Bancffosfelen	Yellow – B	Penygaer	Yellow – B
Gwynfryn	Yellow – A	Model	Yellow - B
Carway	Yellow – A	Llanllwni	Yellow – B
Ponthenri	Yellow – A	Bro Brynach	Yellow – B
Bancyfelin	Yellow – B	Dewi Sant	Yellow – B
Betws	Yellow - B	Pontyberem	Yellow – B
Ysgol Y Castell	Yellow – C	Brynsierfel	Yellow – B
Blaenau	Yellow – C	Stebonheath	Yellow – B
Cwrt Henri	Yellow – B	Llanmilo	Yellow – C
Llangadog	Yellow – B	Old Road	Yellow – C
Myrddin	Yellow – B	Ysgol Griffith Jones	Yellow – A
Llys Hywel	Yellow – B	Carreg Hirfaen	Yellow – B
Brynsaron	Yellow – B	Pum Heol	Yellow – B
Llannon	Yellow – B	Abergwili	Yellow – B
Bryn	Yellow – B	Laugharne	Yellow – B
Bro Banw	Yellow – B	Llanddarog	Yellow – B
Dafen	Yellow – B		

Amber Support Category Schools (26):

School	Step 2 & 3	School	Step 2 & 3
Bigyn	Amber – C	Hafodwenog	Amber – B
Pontiets	Amber – C	Cynwyl Elfed	Amber – C
Meidrim	Amber – B	Maesymorfa	Amber – C
Llanedi	Amber – B	Bryn Teg	Amber – B
Ffairfach	Amber – B	St Mary's, Carmarthen	Amber – C
Talley	Amber – C	Pentip	Amber – C
Llanpumsaint	Amber – C	Abernant	Amber – C
Llansteffan	Amber – B	Tremoilet	Amber – C
Tycroes	Amber – B	Rhys Prichard	Amber – B
Ffwrnes	Amber – C	Ferryside	Amber – C
Y Dwylan	Amber – C	Cae'r Felin	Amber – C
Y Bedol	Amber – C	Ysgol Gymraeg Rhydaman	Amber – C
Y Fro	Amber – B	Maesybont	Amber – C

Red Support Category Schools (1):

School	Step 2 & 3
Ysgol Gwenllian	Red – D

8. National Categorisation Support Category 'Four Year Comparison' for Primary and Secondary Schools

Within this section of the report we provide a comprehensive overview of each schools' National Categorisation journey since the model's inception in 2014. It is important to emphasise that a school's final 'support category outcome' is achieved through detailed discussion and collaborative working between all partners involved in the process.

i) Primary Schools:

Name	2014 Step 1	2014 Step 2	2014 Step 3	2015 Step 1	2015 Step 2	2015 Step 3	2016 Step 1	2016 Step 2	2016 Step 3	2017 Step 2	2017 Step 3
Cefneithin	4	B	Amber	3	B	Amber	3	B	Yellow	B	Yellow
Ysgol Gynradd Drefach	3	B	Amber	4	B	Amber	4	B	Amber	B	Yellow
Maesybont	3	C	Amber	2	C	Amber	2	C	Yellow	C	Amber
Llechyfedach	3	C	Amber	2	B	Yellow	2	B	Yellow	B	Yellow
Y Tymbl	3	C	Amber	2	B	Yellow	1	B	Yellow	B	Yellow
Gorslas	3	B	Amber	1	B	Yellow	1	B	Yellow	B	Yellow
Cross Hands	4	B	Amber	3	B	Yellow	3	B	Yellow	B	Yellow
Llangain	4	B	Yellow	4	B	Yellow	4	B	Yellow	B	Yellow
Peniel	3	B	Yellow	2	A	Yellow	1	A	Yellow	B	Yellow
Bancffosfelen	4	C	Amber	2	B	Yellow	1	B	Yellow	B	Yellow
Gwynfryn	4	B	Amber	4	B	Amber	3	B	Yellow	A	Yellow
Carway	4	B	Yellow	4	B	Amber	3	B	Yellow	A	Yellow
Pontyates	4	B	Amber	3	C	Amber	3	C	Amber	C	Amber
Ponthenri	3	B	Yellow	3	B	Amber	3	B	Yellow	A	Yellow
Bancyfelin	2	B	Yellow	3	B	Yellow	3	B	Yellow	B	Yellow
Meidrim	3	B	Amber	2	B	Yellow	3	C	Amber	B	Amber
Saron	3	B	Yellow	2	A	Green	2	A	Green	A	Green
Betws	2	B	Yellow	2	B	Yellow	2	B	Yellow	B	Yellow
Ty-croes	2	B	Yellow	2	B	Yellow	3	B	Yellow	B	Amber
Parcyrhun	2	A	Green	1	A	Green	1	A	Green	A	Green

Blaenau	4	C	Red	3	B	Amber	2	C	Yellow	C	Yellow
Llanedi	3	C	Amber	2	C	Yellow	3	C	Amber	B	Amber
Ffairfach	4	C	Amber	4	C	Amber	4	C	Amber	B	Amber
Talley	3	B	Amber	3	B	Amber	3	C	Amber	C	Amber
Cwrt Henri	2	B	Yellow	2	B	Yellow	2	B	Yellow	B	Yellow
Llangadog	2	C	Yellow	1	B	Yellow	2	B	Yellow	B	Yellow
Rhys Prichard	3	B	Yellow	2	B	Yellow	2	B	Yellow	B	Amber
Llys Hywel	3	A	Yellow	3	A	Yellow	2	A	Yellow	B	Yellow
Brynsaron	3	B	Yellow	3	B	Yellow	3	B	Yellow	B	Yellow
Llanpumsaint	3	B	Yellow	4	B	Amber	3	C	Amber	C	Amber
Mynydd-y-Garreg	3	B	Yellow	2	A	Yellow	3	A	Yellow	A	Green
Johnstown	1	A	Green	1	A	Green	1	A	Green	A	Green
Y Dderwen	2	A	Green	1	A	Green	1	A	Green	A	Green
Llanmiloe	3	B	Yellow	1	D	Amber	2	C	Amber	C	Yellow
Bryn	4	B	Amber	3	B	Amber	3	B	Yellow	B	Yellow
Bynea	3	B	Yellow	3	B	Yellow	2	B	Yellow	A	Green
Dafen	3	B	Amber	2	B	Yellow	2	B	Yellow	B	Yellow
Pum Heol	1	B	Green	1	B	Green	2	C	Yellow	B	Yellow
Llangennech Infants	2	A	Green	2	A	Green	1	A	Green	#N/A	#N/A
Llangennech Juniors	2	A	Green	1	A	Green	1	A	Green	#N/A	#N/A
Hendy	3	B	Yellow	2	B	Yellow	2	A	Green	A	Green
Ffwrnes	3	B	Yellow	3	B	Yellow	2	A	Green	C	Amber
Old Road C.P. School	2	C	Amber	2	C	Yellow	3	C	Amber	C	Yellow
Llansteffan	3	B	Yellow	2	B	Yellow	3	B	Amber	B	Amber
Llannon	3	B	Yellow	3	B	Yellow	3	B	Yellow	B	Yellow
Brynsierfel	4	C	Amber	3	C	Amber	3	A	Yellow	B	Yellow
Brynaman	1	A	Green	1	A	Green	2	A	Green	A	Green
Tybernant	2	B	Yellow	2	B	Yellow	2	C	Amber	C	Amber
Myrddin	3	B	Yellow	3	B	Yellow	4	A	Yellow	B	Yellow
Llangunnor	4	B	Amber	3	B	Yellow	3	B	Yellow	A	Green

Trimsaran	3	A	Yellow	3	A	Yellow	3	A	Yellow	A	Green
Swiss Valley	2	A	Yellow	1	A	Green	2	A	Green	A	Green
Marc y Tywyn	2	A	Green	2	A	Green	2	A	Green	A	Yellow
Pembrey	2	A	Green	1	A	Green	1	A	Green	A	Green
Rhydaman	1	A	Green	1	A	Green	1	A	Green	C	Amber
Beca	3	A	Yellow	4	A	Yellow	4	A	Yellow	B	Yellow
Llandybie	2	B	Yellow	2	B	Yellow	2	B	Yellow	B	Yellow
Hafodwenog	3	B	Yellow	4	A	Yellow	3	C	Amber	B	Amber
Teilo Sant	2	A	Green	1	A	Green	1	A	Green	B	Yellow
Llanybydder	3	B	Yellow	3	B	Yellow	2	B	Yellow	B	Yellow
Llandeilo	4	C	Amber	3	B	Amber	2	A	Yellow	A	Green
Cynwyl Elfed	4	B	Yellow	3	B	Amber	4	C	Amber	C	Amber
Halfway	3	B	Yellow	3	B	Yellow	2	B	Yellow	B	Yellow
Pwll	3	B	Amber	3	B	Yellow	3	B	Yellow	B	Yellow
Penygaer	3	B	Amber	2	B	Yellow	2	A	Yellow	B	Yellow
Y Castell	2	A	Green	2	B	Yellow	2	B	Yellow	C	Yellow
Penygroes	2	B	Yellow	2	B	Yellow	1	A	Green	A	Green
Nantgaredig	4	A	Green	4	A	Green	4	A	Yellow	A	Green
Gwenllian	3	C	Amber	2	B	Yellow	1	C	Yellow	D	Red
Dewi Sant	3	A	Yellow	2	A	Green	2	B	Yellow	B	Yellow
Pontyberem	4	C	Amber	2	B	Yellow	2	B	Yellow	B	Yellow
Bigyn	3	B	Amber	3	B	Yellow	2	B	Yellow	C	Amber
Stebonheath	3	B	Yellow	3	B	Yellow	3	B	Yellow	B	Yellow
Y Ddwylan	3	B	Yellow	2	B	Yellow	1	B	Yellow	C	Amber
Richmond Park	3	B	Amber	4	B	Amber	3	B	Yellow	A	Green
Griffith Jones	4	B	Amber	3	A	Yellow	2	A	Yellow	A	Yellow
Y Fro	3	B	Yellow	1	D	Amber	2	D	Red	B	Amber
Carreg Hirfaen	3	B	Yellow	2	B	Yellow	1	B	Yellow	B	Yellow
Cae'r Felin	4	C	Amber	4	B	Amber	2	B	Yellow	C	Amber
Y Bedol	1	A	Green	1	A	Green	1	A	Green	C	Amber

Bro Brynach	4	B	Yellow	4	B	Amber	3	B	Amber	B	Yellow
Bryn Teg	2	A	Green	2	B	Yellow	3	C	Amber	B	Amber
Y Felin	3	B	Yellow	2	A	Yellow	2	A	Green	A	Green
Bro Banw	3	A	Green	2	A	Green	2	C	Amber	B	Yellow
Maes Y Morfa	3	B	Yellow	2	B	Yellow	3	C	Amber	C	Amber
Burry Port	1	A	Green	1	A	Green	1	A	Green	A	Green
Pen Rhos	#N/A	#N/A	#N/A	#N/A	#N/A	#N/A	N/A	C	Amber	B	Yellow
Abergwili	2	B	Yellow	2	B	Yellow	1	B	Yellow	B	Yellow
Tremoilet	2	B	Yellow	1	B	Yellow	2	C	Amber	C	Amber
Laugharne	2	B	Yellow	2	B	Yellow	1	C	Yellow	B	Yellow
Llanddarog	3	B	Yellow	3	B	Yellow	2	B	Yellow	B	Yellow
Ferryside	3	B	Yellow	3	A	Yellow	3	B	Yellow	C	Amber
Llanllwni	3	B	Yellow	4	B	Yellow	3	B	Yellow	B	Yellow
St Mary's Catholic Llanelli	3	B	Yellow	3	B	Yellow	2	A	Yellow	A	Green
St Mary's RC Carmarthen	4	C	Red	4	C	Amber	4	B	Amber	C	Amber
Penboyr	2	B	Yellow	1	B	Yellow	1	B	Yellow	A	Green
Pentip CiW	2	B	Yellow	3	B	Amber	4	C	Amber	C	Amber
Model Church In Wales School	3	A	Yellow	3	A	Yellow	3	B	Yellow	B	Yellow

ii) Secondary Schools:

Name	2014 Step 1	2014 Step 2	2014 Step 3	2015 Step 1	2015 Step 2	2015 Step 3	2016 Step 1	2016 Step 2	2016 Step 3	2017 Step 2	2017 Step 3
Ysgol Dyffryn Aman	3	C	Amber	3	B	Yellow	2	B	Yellow	B	Yellow
Coedcae School	2	C	Yellow	3	A	Yellow	3	A	Yellow	A	Green
Ysgol Gyfun Y Strade	2	B	Yellow	1	A	Green	1	A	Green	B	Yellow
Glan-y-Mor School	3	C	Yellow	2	A	Yellow	1	A	Green	A	Green
Bryngwyn School	2	A	Green	1	A	Green	3	A	Yellow	A	Green
Ysgol Gyfun Gymraeg Bro Myrddin	2	B	Yellow	2	A	Green	1	A	Green	A	Green
Ysgol Gyfun Emlyn	2	B	Yellow	2	B	Yellow	2	C	Amber	B	Yellow
Queen Elizabeth High School	3	C	Amber	3	C	Amber	3	C	Amber	B	Yellow
Ysgol Maes Y Gwendraeth	3	B	Yellow	3	B	Yellow	3	B	Yellow	A	Green
Ysgol Bro Dinefwr	1	B	Yellow	2	B	Yellow	1	A	Green	A	Green
Dyffryn Taf	3	C	Amber	3	B	Amber	2	B	Yellow	B	Yellow
St John Lloyd Catholic Comprehensive School	2	A	Green	2	A	Green	1	A	Green	B	Yellow

PWYLLGOR CRAFFU ADDYSG A PHLANT

14^{eg} Mawrth 2018

ADDYSG DDEWISOL YN Y CARTREF: PAPUR BRIFFIO MAWRTH 2018

Ystyried y materion canlynol a chyflwyno sylwadau arnynt:

I nodi cynnwys yr adroddiad a gweithredoedd allweddol yn deillio wrth ddadansoddi'r tirlun cyfredol mewn perthynas ag Addysg Ddewisol yn y Cartref

Rhesymau:

Mae'r Pwyllgor Craffu Addysg a Phlant wedi gorchymun adroddiad briffio mewn perthynas â'r datblygiadau mwyaf diweddar mewn Addysg Ddewisol yn y Cartref. At hynny, awgrymir datblygiadau pellach yn y maes yma ar gyfer ystyriaeth yr Aelodau.

Angen cyfeirio'r mater at y Bwrdd Gweithredol er mwyn gwneud penderfyniad: NAC OES

Aelod y Bwrdd Gweithredol sy'n gyfrifol am y Portffolio:

Cyng. Glynog Davies (Addysg a Phlant)

Y Gyfarwyddiaeth: Addysg a Phlant Enw Pennaeth y Gwasanaeth: J. Aeron Rees Awdur yr adroddiad: Aeron Rees / Su Crowther	Swyddi: Pennaeth Cwricwlwm a Lles Ymgynghorydd Addysg Ddewisol yn y Cartref	Rhifau Ffôn / Cyfeiriadau E-bost: 01267 246 532 JAREes@sirgar.gov.uk 01267 246 727 SCrowther@sirgar.gov.uk
---	---	---

**EXECUTIVE SUMMARY
EDUCATION & CHILDREN
SCRUTINY COMMITTEE
14th MARCH 2018**

Elective Home Education Briefing Paper: March 2018

Elective Home Education is where parents or guardians decide to provide home-based education for their children instead of sending them to school. It is not home tuition provided by the local education authority or where a local education authority provides education otherwise than at school.

The LA recognises that elective home education is a key aspect of parental choice and therefore aims to encourage good practice in its relationships with home educators. This is achieved by clearly setting out the policy landscape, and by providing information and advice on the roles and responsibilities of the LA and parents in relation to children educated at home.

Parents may choose to exercise their right to educate their children at home and may do so for a variety of reasons. The reasons themselves should not have any bearing on the LA's treatment of families who home educate, since our prime interest lies in the parents' educational provision for their children.

We seek to build effective relationships with home educators to safeguard the educational interest and welfare of the children and young people. We will provide parents who are, or who are considering, home educating with a named contact within the authority who is familiar with home education policy and practice and has an understanding of the relevant legislation and a range of educational philosophies.

While there is no legal framework for the LA to regularly monitor provision of home education, we are conscious of our wider duties of care, and we will contact parents to discuss their ongoing home education provision. The LA is mindful of new WG non-statutory guidance published on 9.1.17 (see below), which provides a basis for our approach.

The LA is not legally obliged to provide any resources for children and young people educated at home. However, we shall:

- provide advice and support on curriculum matters
- provide information on organisations which support home educators
- facilitate access to some services e.g. Careers, Counselling

The LA has established a database for children educated at home. All schools will be required to notify the appropriate LA officer of a parent's intention to home educate. A record of visits is kept by the LA officer responsible for this area of work.

DETAILED REPORT ATTACHED

YES

IMPLICATIONS

I confirm that other than those implications which have been agreed with the appropriate Directors / Heads of Service and are referred to in detail below, there are no other implications associated with this report.

Signed: J. Aeron Rees Head of Curriculum and Wellbeing

Policy, Crime & Disorder and Equalities	Legal	Finance	ICT	Risk Management Issues	Staffing Implications	Physical Assets
YES	YES	YES	YES	YES	YES	NONE

POLICY, CRIME & DISORDER AND EQUALITIES

A review of Carmarthenshire's policies is timely, in lieu of: recent Welsh Government guidance WG guidance (202/2016 – January 2017). In addition, the Cabinet Secretary announced on 30th January 2018 her '*intention to assist local authorities in meeting their existing duties to identify children not receiving a suitable education. [Cabinet Secretary] intend(s) to consult on using existing powers found in section 29 of the Children Act 2004 to require local authorities to establish a database to assist them in identifying children not receiving suitable education. The consultation will also consider which partners will be able to provide the most complete database, such as local health boards.*'

In addition, a policy review is also pertinent following more recent proactivity by The WG Home Education Stakeholder Working Group, which is attended by Carmarthenshire officers.

LEGAL

Parents have a right to educate their children at home providing that they fulfil the requirements of **Section 7 of the Education Act 1996**. This places a duty on the parents of every child of compulsory school age to cause him or her to receive **efficient full-time education suitable to their age, ability and aptitude, and to any special educational needs that they may have**, either by regular attendance at school or otherwise.

In guidance 'suitable' education has been defined as: '*... meaning efficient fulltime education suitable to their age, ability and aptitude and to any special educational needs they may have.*' A further legal definition is provided by English case law, which determines that [suitable education] "*primarily equips a child for life within the community of which he is a member, rather than the way of life in the country as a whole, as long as it does not foreclose the child's options in later years to adopt some other form of life if he wishes to do so*" (*R v Secretary of State for Education and Science, ex parte Talmud Torah Machzkei Hadass School Trust*, 12 April 1985).

An efficient education is considered as one which: '*Achieves what it sets out to achieve*'.

LAs are not responsible for the provision of EHE or under any statutory obligation to support it. However, under section 436A of the Education Act 1996, LAs do have a duty to make arrangements to identify children not receiving a suitable education...or 'may be experiencing neglect'.

FINANCE

There is no legal duty for local authorities to provide financial support to EHE families or networks. If a child is not registered with a school, then the local authority does not receive any funding for that child and is therefore not currently legally obliged to pass on any financial support to parents to assist with schooling provision for learners who are home educated.

ICT

A number of data management systems are used to harvest information, all of which serve different purposes. The systems need to be harmonised going forward.

RISK MANAGEMENT

Safeguarding is a consideration for the LA in this area of service delivery. We are currently working under the parameters of the draft CYSUR protocol. This protocol needs to be formally adopted and we seek to further clarify processes for reporting safeguarding by developing one page profiles for risk assessments on property.

Multi-agency input is being refined – systems to ensure schools are promptly advising officers of any de-registrations whilst ensuring the prompt completion of exit forms are being pursued;

We also cross-check with the Care First, and health systems whenever possible – which helps with building up a risk profile of individual cases.

Lone working policy and guidance for staff is important – the EHE advisor recently attended training in this area and has taken a number of actions to consolidate practice.

STAFFING IMPLICATIONS

The local authority has a monitoring role but does not currently attract any dedicated funding to provide this. With an increasing number of EHE learners in Carmarthenshire, it has been identified to consolidate the role of an officer to undertake and further develop this role. At present a part-time home tutor/qualified teacher undertakes this work.

There is a staffing-related issue where, with increasing requests for time to administer data capture, recording and FOIA requests, a Systems Officer from the ALN team is called upon to attend to demands. This impinges increasingly on this officer's time, which needs to be resolved as the situation puts pressure on other services.

CONSULTATIONS

I confirm that the appropriate consultations have taken in place and the outcomes are as detailed below:

Signe d: J. Aeron Rees Head of Curriculum and Wellbeing

1. Local Member(s) – N/A
2. Community / Town Council – N/A
3. Relevant Partners – N/A
4. Staff Side Representatives and other Organisations – N/A

**Section 100D Local Government Act, 1972 – Access to Information
List of Background Papers used in the preparation of this report:**

THESE ARE DETAILED BELOW:

Title of Document	File Ref No. / Locations that the papers are available for public inspection
Elective home education guidance: Non statutory guidance for local authorities (202/2016) (January 2017)	http://gov.wales/topics/educationandskills/schoolshome/pupilsupport/elective-home-education-guidance/?lang=en http://gov.wales/docs/dcells/publications/160106-ehe-guidance-cy.pdf
Statement by the Cabinet Secretary for Education: Securing the Right to a Suitable Education for All (30.1.18)	http://record.assembly.wales/Plenary/4901?lang=en-GB#A10000068
An evidence based review of the risks to children and young people who are educated at home (commissioned by The National Independent Safeguarding Board – October 2017)	http://safeguardingboard.wales/2017/11/16/home-education-children-report/

Mae'r dudalen hon yn wag yn fwriadol

ELECTIVE HOME EDUCATION BRIEFING PAPER: MARCH 2018

1. Introduction

a. Background

Education is compulsory in Wales for children between the ages of 5 and 16. However, attendance in a school is not. The primary duty to ensure a child is educated rests with parents.

The vast majority of families in Wales will choose to have their children educated through the mainstream system of education but some parents choose to educate their children *otherwise* than at school, and it is their right under the law to do so. This is known as **Elective Home Education (EHE)**.

Elective home education is where parents or guardians decide to provide home-based education for their children instead of sending them to school. It is not home tuition provided by a local education authority or where a local education authority provides education otherwise than at a school.

Recent research conducted on behalf of the Welsh Government has indicated that the numbers of parents choosing to home educate has increased in recent years.

The EHE community in Wales is a diverse population with families choosing to home-educate for a variety of reasons. These include:

- ideological or philosophical
- health (including emotional health and well-being)
- cultural
- religious
- bullying
- special educational provision
- language choice
- length of school journey
- awaiting a place in school of their choice
- flexibility and tailoring of approach.

b. The legal position

Article 2 of Protocol 1 of the European Convention on Human Rights states that:

‘No person shall be denied the right to education. In the exercise of any functions which it assumes in relation to education and to teaching, the State shall respect the right of parents to ensure such education and teaching is in conformity with their own religious and philosophical convictions.’

The right to home-educate is not a fundamental one. It is conditional on parents providing their child with an ‘efficient’ and ‘suitable’ education. Parents may educate their children at home providing they fulfil the requirements of section 7 of the Education Act 1996.

The parent of every child of compulsory school age shall cause him to receive **efficient** full-time education **suitable** –

- to his age, ability and aptitude, and
- to any special educational needs he may have, either by regular attendance at school or otherwise.

In guidance ‘suitable’ education has been defined as: ‘... *meaning efficient fulltime education suitable to their age, ability and aptitude and to any special educational needs they may have.*’ A further legal definition is provided by English case law, which determines that [suitable education] “*primarily equips a child for life within the community of which he is a member, rather than the way of life in the country as a whole, as long as it does not foreclose the child’s options in later years to adopt some other form of life if he wishes to do so*” (*R v Secretary of State for Education and Science, ex parte Talmud Torah Machzkei Hadass School Trust*, 12 April 1985).

An efficient education is considered as one which: ‘*Achieves what it sets out to achieve*’

This ruling enables parents to choose their educational approach. Home educating families do not have to follow any particular curriculum and there is no single 'right' way to educate a child at home. Some use a holistic approach, while others follow the National Curriculum quite formally and their children take GCSEs. The LA does not support or endorse any particular approach and its responsibility is to ensure that whatever style of education is provided meets the needs of each child and young person on EHE and that each individual makes progress.

Figure 1: Home education approaches

<p>Structured</p> <p>A fixed timetable or schedule with content sometimes following the national curriculum.</p> <p>Formal or focused learning makes up between three to five hours per day, with free play or child-initiated projects in the afternoon.</p> <p>Trips, groups, courses, activities and additional learning opportunities reinforce or embed the learning.</p> <p>Autonomous or child-led learning</p> <p>The learning is prompted and engaged by the learner and facilitated by the parent.</p> <p>There are several methodological or ideological approaches such as:</p> <ul style="list-style-type: none"> unit or project driven ‘classical’ – three stages of preparing the learner to then teach themselves ‘Charlotte Mason’ – through engagement with well-written books. <p>Unschooling</p> <p>The learner is encouraged to initiate own learning through exploration and engagement with activities of their own making or sourcing.</p> <p>Parents facilitate access to opportunity but try not to guide or lead.</p>

c. LA Duties

Under **Section 436A of the Education Act 1996**, Local authorities have a statutory duty to make arrangements to enable them to establish the identities, so far as it is possible to do so, of children in their area who are not receiving a suitable education:

‘A local education authority must make arrangements to enable them to establish (so far as it is possible to do so) the identities of children in their area who are of compulsory school age but

(a) are not registered pupils at a school, and

(b) are not receiving suitable education otherwise than at a school’.

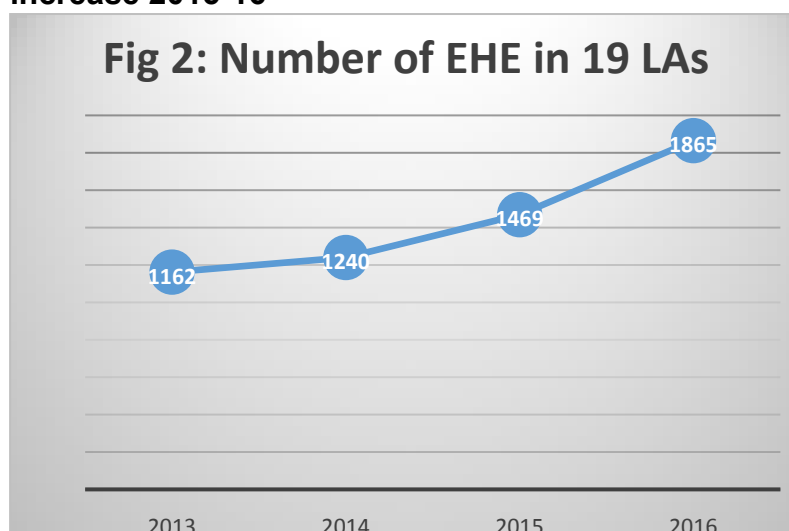
The duty applies in relation to children of compulsory school age who are not on a school roll, and who are not receiving a suitable education otherwise than being at school (for example, at home, privately, or in alternative provision).

However, as parents notify their local authority that they are home educating their children on a voluntary basis, not all electively home educated children will be captured within this data.

There is no legal duty for local authorities to provide financial support to EHE families or networks. If a child is not registered with a school, then the local authority does not receive any funding for that child and is therefore not legally obliged to pass on any financial support to parents to assist with schooling provision for learners who are home educated.

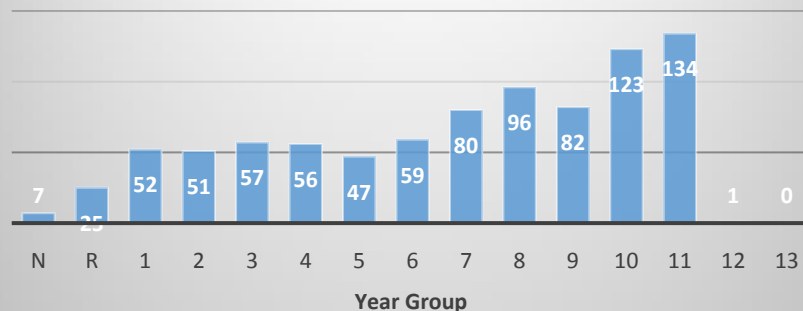
2. National Trends

- a. 2017 data is awaited imminently, so the most specific bespoke data available to us refers to 2016 (*based on research by Theresa Foster-Evans for ADEW/ICG ALN Group 12/05/2017*)
 - i. Numbers:
 - 1. 2,046 children were EHE across Wales
 - 2. Mean average of 93.0 children per LA
 - 3. *Range of 24 to 244 across LAs*
 - 4. ESTIMATED mean rate of 5.6 per 1000 across Wales
 - ii. **Number of Pupils becoming EHE is increasing rapidly: estimate of 24.4% increase 2015-16**



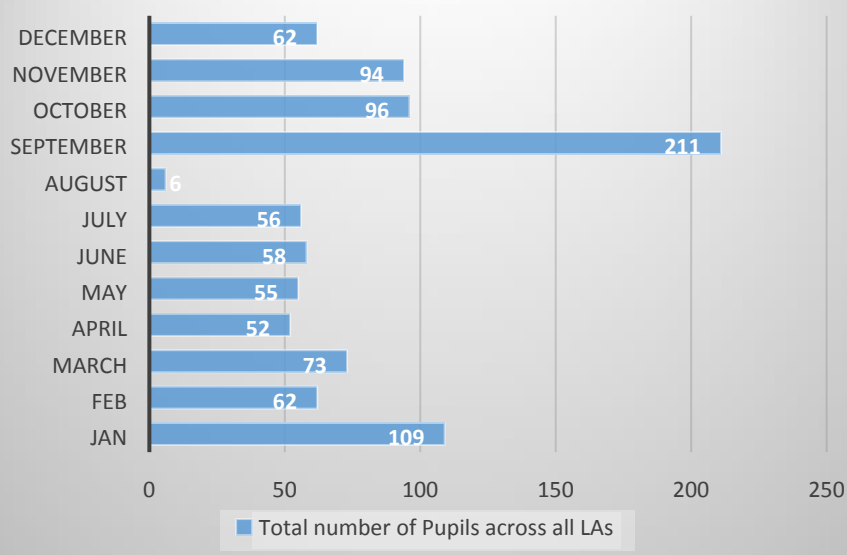
- iii. There is no significant difference in EHE rate for boys and girls
- iv. SEN: Mean of 4.9% EHE children have statements
- v. Ages / Year groups (figure 3 over)

Fig 3: Total Number of Pupils in Each Year Group Becoming EHE 2016



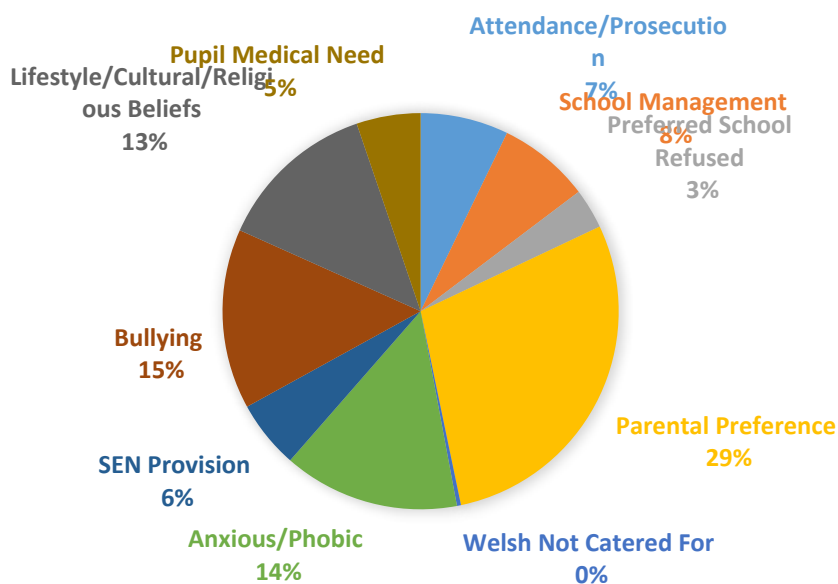
vi. Month Pupil became EHE (Figure 4)

Fig 4: Month Pupil Became EHE (2016)



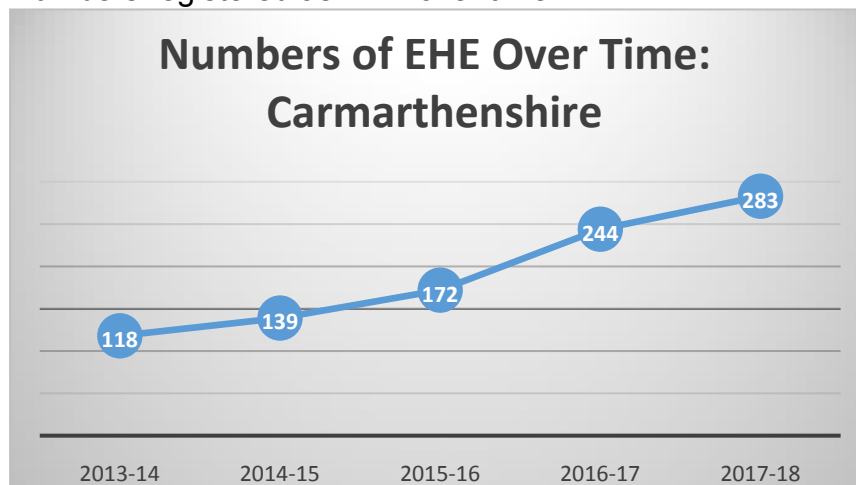
vii. Reasons cited for EHE

FIG. 5: REASONS GIVEN FOR EHE



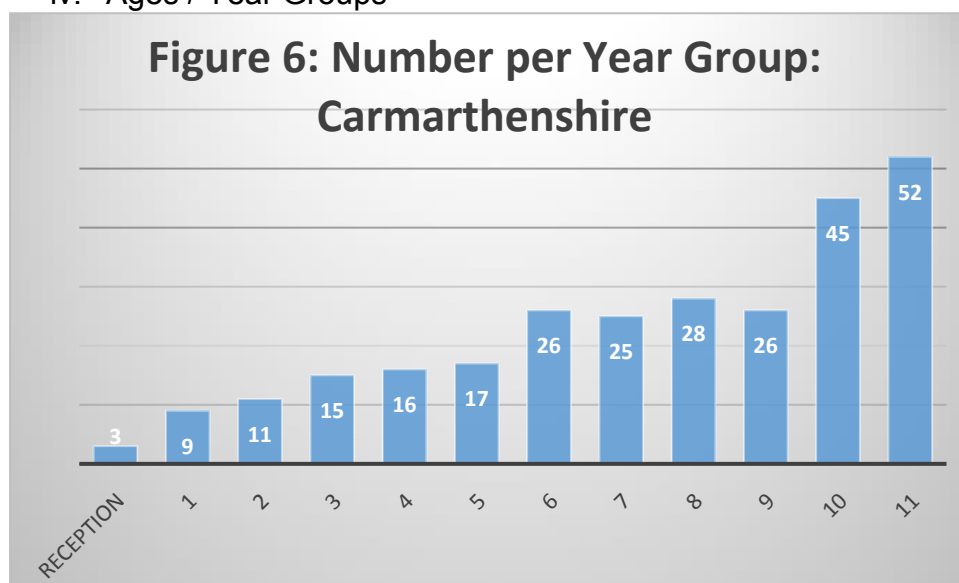
b. **County Trends.** Carmarthenshire data closely mirrors national trends:

i. Numbers registered as EHE over time:



Note: 2017/18 figures represent, broadly:

- 1% of the school population in Carmarthenshire
- Account for circa 13.38 % of the National figure (considered highest numerical in Wales)
- Rate of 10/1000 is above the average mean rate of 5.5/1000 for Wales but not the highest figure in Wales
- ii. Gender – no significant difference whatsoever
- iii. SEN – 3% are statemented, lower than the national average
- iv. Ages / Year Groups

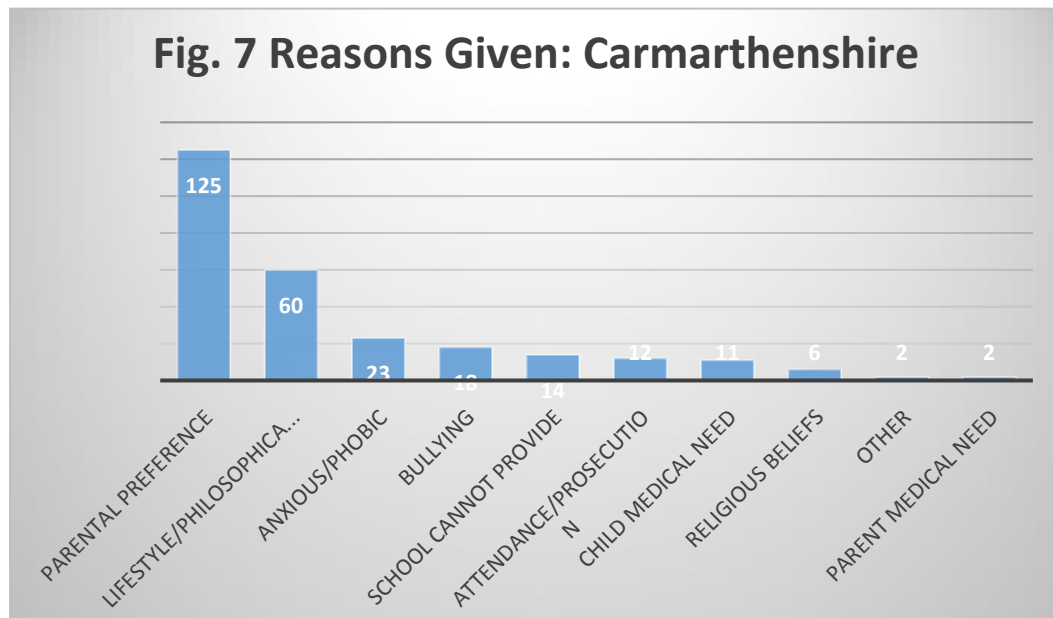


KS4: 97
KS3: 79
KS2: 74
FP: 23

Note: 52 have de-registered since September 2017

- v. Month de-registered – reflect national trends
- vi. Reasons given for EHE (over)

Fig. 7 Reasons Given: Carmarthenshire



3. Short History

- a. National: Information pertaining to EHE was referenced in chapter six of the guidance issued in 2006 (National Assembly for Wales Circular No: 47/2006, *Inclusion and pupil support*). This was replaced by non-statutory guidance 202/2016, issued in January 2017.

Kirsty Williams, Cabinet Secretary for Education, stated in the Senedd on January 30th, 2018, that *'it is fair to say that home education legislation in Wales is one of the most light touch in Europe'*. This was a precursor to announcing exercising the requirement, under current legislation, for LAs to establish a database to assist in identifying children not receiving suitable education. She also mentioned that health boards, independent schools and possible statutory guidance can be deployed to assist with maintaining the database. Whilst advocating a more robust system, her commitment to the agenda and to supporting home educating families was reiterated in the statement; *'I am committed to strengthening the support available to home educators, and, to that end, we are developing a package of educational support. This package will include making Hwb available to home-educated children, additional learning needs support, help with exam registration, and exploring options for home-educating families to learn Welsh and a clear offer of support from Careers Wales...I fully respect the choice of parents to home educate their children, and nothing that I'm considering or proposing will change that. I have no doubt that the vast, vast majority of home-educating parents choose to do so for valid reasons, and that, in some cases, it may well be the very best choice for the child, but I also believe that the Government has a moral duty to ensure that all children receive a suitable education, and an expectation that local authorities will act on their legal duties to intervene when children are not receiving a suitable education or may be experiencing neglect.'*

Activity in this area of provision has intensified, as testified by increasing momentum and activity via the WG EHE Education Stakeholder Working Group of which Carmarthenshire County Council are attendees.

- b. County – This service sat in Home Tuition under the Inclusion section within DEC. From 2013 onwards, it was becoming apparent that EHE was a growing phenomenon in Carmarthenshire, meriting the attention of a designated officer, assigned and working part-time (0.6). As a result, and over the intervening years,

Tudalen 50 more robust systems of data collection, monitoring and support have been put in

place. Currently, the Service is being subsumed into the Curriculum and Wellbeing division, so that a re-aligned strategic focus can be applied to this area, coupled with more dynamic operational delivery, catering to emerging trends.

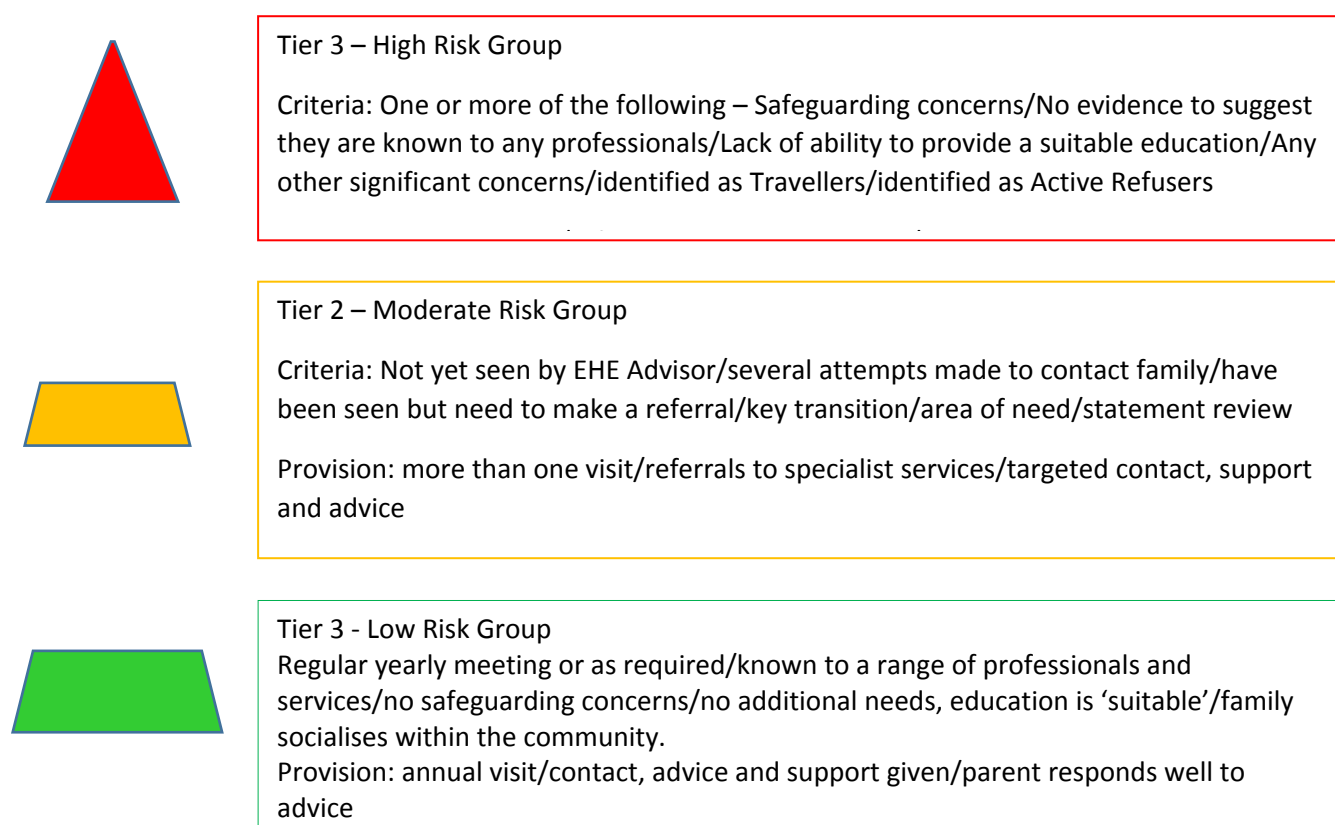
The data outlined above alludes that Carmarthenshire has a not insubstantial home educating community, which can be attributed to lifestyle choices and improving methods of identifying families who home educate. Our approach is to provide as much support as current resources permit, with a stress on formulating positive relationships with home educators and their children. Parents request a wide range of support on a number of diverse topics e.g.:

- Writing a reference for a college placement
- Advice on claiming child benefit
- Advising school/parents about flexi-schooling
- Applying for a school place
- Meeting with school to discuss transition
- Meeting with young person to resolve personal issues about school
- Information about Welsh lessons/looking for a Welsh tutor
- Supporting children on Child Protection register

i. Recent Service developments include:

1. Developing a **Caseload Management model**, based on risk – in terms of safeguarding considerations and whether a suitable education or otherwise is considered to be in place and provided:

Figure 8: Caseload Management System: Carmarthenshire

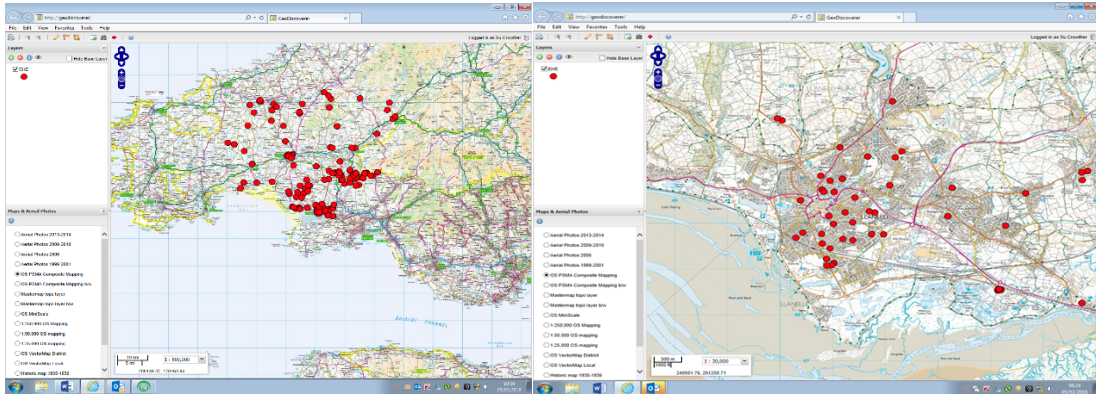


Notes:

- The data capture has its limitations and certainly not all EHE families believed to be in existence are recorded.
- Of known contacts:
 - 87% are Active Engagers
 - 13% considered Active Refusers

- Currently there are:
 - Families in tier 3: 7 (2.5%)
 - Families in tier 2: 103 (36.4%)
 - Families in tier 1: 173 (61.1%)

2. The **Geo Discovery Tool** is adopted and aiding the identification, and distribution of, EHE families within the county (**Fig. 10 below**). This is helpful to spot trends and interpret needs in various parts of the country:



3. **Safeguarding:** The Dylan Seabridge case raised questions about whether existing safeguarding mechanisms are sufficient for children who are home educated. In February 2017 the National Independent Safeguarding Board (NISB) commissioned Cascade, Children's Social Care Research and Development Centre, at Cardiff University to explore the possible risks in relation to safeguarding, health and well-being of children and young people who are educated at home. This report is being considered to further augment our safeguarding procedures.
4. **Data Management** is being developed, including amendments to the Exit form to include ALN, reasons numbered according to the WG requirements and for FOIA and PLASC; introduce one-page profiles; risk assessment; reporting of child returning to school;

4. Plans for future service developments

- i. Strategic – EHE strategy in Carmarthenshire for the future will be governed by:
 1. The United Nations Convention on the Rights of the Child (UNCRC)
 2. The Well Being Of Future Generations Act 2015
 3. National guidance – both current and proposed
 4. Further developments from the National Stakeholder Group
 5. Further refinements determined by the approach evolving in the Curriculum and Wellbeing Division, based on the interplay between inclusion, equity, wellbeing and excellence in curricular provision
- ii. Draft Programme of developments (over):

Figure 9: Outline Development Plan for EHE in Carmarthenshire

Action	By When?	By Who?
Staffing: <ul style="list-style-type: none"> Confirm interim arrangements with designated staff member Move to place role on a more permanent footing, framed within the wider Inclusion Department – scope out and agree remodelled Job profile for EHE officer Move to appointment 	4.3.18 May 2018	AR RW/EW/AR/AM
Safeguarding <ul style="list-style-type: none"> Formally adopt Draft CYSUR Safeguarding Protocol on an interim basis and plan for refinements Take an internal steer on the viability of the protocol for longer term adoption Initiate action emanating from the protocol 	End 5.2018	DMT SS/RC
Caseload Management <ul style="list-style-type: none"> Develop and implement models for managing workload Consolidate advice to parents immediately following de-registration 	September 2017	AR/EW/SC
Guidance to Schools <ul style="list-style-type: none"> Issue interim advice and reminders to schools Issue firmer, updated and more comprehensive guidance to schools (pending updated vision) 	December 2017 April 2018	AR/DMT
Further Develop the vision for the Service in Carmarthenshire <ul style="list-style-type: none"> Evaluate existing EHE arrangements in Carmarthenshire Formulate practical responses to existing Welsh Government Guidance Incorporate the recommendations of the National Working Group Complete data analysis 	Ongoing 2018	AR/DMT
Training <ul style="list-style-type: none"> Adopt National training plan suggestions and consider capacity required for successful delivery to officers, school leaders and practitioners 	Rolling programme	AR/EW/RW

Green type: Already achieved

iii. Operational: Issues being actively considered at present include:

1. Monitoring – developing a one page profile to capture visits, which are age appropriate
2. Consider ways to signpost Welsh lessons to EHE pupils
3. Ongoing work to assign an exam centre for EHE pupils
4. Facilitate access to specialist training for EHE community – e.g. rights of child
5. Consider access to GCSE Maths, English and Welsh
6. Consider access to essential skills qualifications
7. Investigate how to further curb and circumvent year 10/11 de-registrations

5. Conclusions

As a Department, the education of pupils in our schools and special settings is our number one priority. That said, and notwithstanding funding issues and the lack of statutory guidance, the Local Authority is mindful of its obligations to the home educating community. We engage proactively in developing the policy landscape on a national scale and wish to work constructively and conscientiously with the home educating community in Carmarthenshire. We will continue to offer advice to those who require, or are receptive to, our support. The next few years will be an interesting time for this agenda and we look forward to making further concrete progress, in harmony with the national steer for EHE, and in partnership with school-age parents in all our communities.

**Adran Addysg A Phlant****Llywodraethu a Chynhwysiad**Adeilad 2, Parc Dewi Sant, Heol Ffynnon Job,
Caerfyrddin, Sir Gaerfyrddin. SA31 3HB**Department for Education and Children
Governance and Inclusion**Building 2, St David's Park, Jobs Well Road,
Carmarthen, Carmarthenshire. SA31 3HB**School Exit Form (Elective Home Education)**

Pupil Details		
Forename:	Surname:	
Preferred name:	Date of Birth:	
Gender:	Home Address:	
School Name: ALN? Yes or No Details:		
Year:	Postcode:	
Admission Date:	Leaving Date:	
Reason/s for deregistration:		
Ethnicity:	Home Language/s:	Religion:
Parent/Carers Details		
Name:	Name:	
Relationship:	Relationship:	
Parental Responsibility: Y / N	Parental Responsibility: Y / N	
Address:	Address:	
Postcode:	Postcode:	
Home Tel:	Home Tel:	
Mobile:	Mobile:	
Work Tel:	Work Tel:	
Email:	Email:	

SAFEGUARDING

Does the school hold any welfare or safeguarding concerns regarding the child? Yes / No

If yes, have these concerns been referred to Social Care? Yes / No

N.B. As the child will no longer be within a school community, please consider whether any concerns held warrant Social Care involvement and refer if appropriate. (If you are unsure whether a referral is appropriate, you should seek a 'no-names' consultation with the child's local Social Care team or the school's locality social worker).

If any such concerns exist, please give details below, together with dates of any referrals made and advice given.

Are parents aware of your concerns? Yes / No / N/A

I have received written confirmation (copy attached) that the pupil below will be receiving elective home education from (date) and I have removed the pupil from my roll.

Signed:

Date:

(Head teacher)
Tudalen 54

Y PWYLLGOR CRAFFU ADDYSG A PHLANT

14EG Mawrth 2018

GRŴP GORCHWYL A GORFFEN Y PWYLLGOR CRAFFU ADDYSG A PHLANT 2017/18 DOGFEN CYNLLUNIO A CHWMPASU

Ystyried y materion canlynol a chyflwyno sylwadau arnynt:

- Ystyried a chymeradwyo nodau a chwmpas gwaith y Grŵp Gorchwyl a Gorffen.
- Cytuno ar aelodaeth y Grŵp Gorchwyl a Gorffen.

Y Rhesymau:

- Mae'n ofynnol i'r Grŵp Gorchwyl a Gorffen adrodd ynghylch cynnydd o ran ei waith i'r prif bwyllgor craffu.

Angen cyfeirio'r mater at y Bwrdd Gweithredol ar gyfer penderfyniad: NAC OES

Yr Aelod o'r Bwrdd Gweithredol sy'n gyfrifol am y portffolio:

Y Cynghorydd G. Davies (Addysg & Phlant)

Y Gyfarwyddiaeth: Addysg a Phlant Enw Pennaeth y Gwasanaeth: Gareth Morgans Awdur yr Adroddiad: Gareth Morgans	Swyddi: Cyfarwyddwr Addysg a Gwasanaethau Plant	Rhifau ffôn / Cyfeiriadau e-bost: 01267 246450 edgmorgans@sirgar.gov.uk
--	---	--

EXECUTIVE SUMMARY

EDUCATION & CHILDREN SCRUTINY COMMITTEE

14TH MARCH 2018

EDUCATION & CHILDREN SCRUTINY COMMITTEE TASK & FINISH GROUP 2017/18 PLANNING AND SCOPING DOCUMENT

The Education & Children Scrutiny Committee has agreed to establish a task and finish group to review Early Years Play and Education.

The Committee's discussions on the key aims and objectives for this task and finish review have been captured and developed into the appended Draft Planning and Scoping document which members of the Committee are asked to consider and agree.

The Committee are required to agree on which members will form the Task and Finish Group, which will consist of up to 6 Members and be politically balanced.

The Task and Finish Group will arrange to hold its first meeting as soon as possible and will appoint a Chair and Vice Chair from its membership at this meeting. Officers from within the Education & Children's Services Department and Democratic Services will support the work of the Task & Finish Group.

DETAILED REPORT ATTACHED?

YES

IMPLICATIONS

I confirm that other than those implications which have been agreed with the appropriate Directors / Heads of Service and are referred to in detail below, there are no other implications associated with this report.

Signed: Linda Rees-Jones Head of Administration & Law

Policy, Crime & Disorder and Equalities	Legal	Finance	ICT	Risk Management Issues	Staffing Implications	Physical Assets
NONE	NONE	NONE	NONE	NONE	NONE	NONE

CONSULTATIONS

I confirm that the appropriate consultations have taken in place and the outcomes are as detailed below:

Signed: Linda Rees-Jones Head of Administration & Law

1. Local Member(s) – N/A

2. Community / Town Council – N/A

3. **Relevant Partners** – If required, representatives from partner organisations will be consulted as part of the Task & Finish Group's review.

4. **Staff Side Representatives and other Organisations** – Officers from the Education & Children's Services Department contributed to the development of the Planning and Scoping Document and will continue to support the work of the Task & Finish Group.

Section 100D Local Government Act, 1972 – Access to Information
List of Background Papers used in the preparation of this report:

THERE ARE NONE

Title of Document	File Ref No. / Locations that the papers are available for public inspection

Mae'r dudalen hon yn wag yn fwriadol

Education and Children's Services Scrutiny Committee Task & Finish Group 2018/19

Early Years Education and Play in Carmarthenshire

Draft Planning & Scoping Document

Task & Finish Objective(s)	<ul style="list-style-type: none"> To review the current provision for early years education and play opportunities and if appropriate make recommendations for service change.
Context	<ul style="list-style-type: none"> The Education and Children's Services Scrutiny Committee has a key role to play in monitoring services, development of key policies and strategies, as well as identifying areas for improvement or development within their remit. The Education and Children's Services Scrutiny Committee agreed in principal to undertake a review into the current provision for early years education and play. Many Elected Members and School Governors have raised this as a concern. The following will be included:- <ul style="list-style-type: none"> ➤ Admissions Policy for Schools ➤ Foundation Phase Provision for 3 year olds ➤ Standard of provision ➤ Play ➤ Childcare ➤ The New 30 Hour Education/Childcare Offer
Membership	<p><u>Elected Members</u></p> <ul style="list-style-type: none"> To be agreed at the Education and Children's Services Scrutiny Committee scheduled to take place on 14th March 2018 Up to 6 Elected Members appointed to reflect the political balance of the Council as whole. <p><u>Advisors / Support Officers</u></p> <ul style="list-style-type: none"> Andi Morgan, Interim Head of Education Services Aeron Rees, Head of Curriculum and Wellbeing Stefan Smith, Head of Children's Services Elin Forsythe, Head of School Effectiveness Simon Davies, Modernisation Services Manager

	<ul style="list-style-type: none"> • Susannah Nolan, Group Accountant • Dylan Jones. School Finance Manager • Angharad Jones, Challenge Adviser • Rose Jones, Foundation Phase Training and Support Officer • Noeline Thomas, Service Manager Children's Services • Lisa Grice, Childcare & Play Sufficiency Manager • Caryl Alban, Play Sufficiency Officer • Michelle Evans Thomas (Democratic Services Officer)
The main aims of the review	<ol style="list-style-type: none"> 1. Review Foundation Phase education provision including- <ol style="list-style-type: none"> a. The statutory requirements b. 3-11 and 4-11 Schools c. Non-maintained settings d. Gaps in provision 2. Review the Standard of provision to include- <ol style="list-style-type: none"> a. Outcomes of ESTYN / CSSIW inspections b. Themes of success and improvement 3. Review the provision of play opportunities to include- <ol style="list-style-type: none"> a. The statutory requirements b. The Play Sufficiency Assessment and Strategy. e. Play opportunities across the County f. Gaps in provision g. Impact of Asset Transfer 4. Review the provision of Childcare to include- <ol style="list-style-type: none"> a. Availability across the county b. Availability of Welsh language provision c. Gaps in provision 5. Consider the 30 Hour Education/Childcare Offer <ol style="list-style-type: none"> a. The requirements b. The Carmarthenshire Scheme 6. Consider Carmarthenshire's Admissions Policy including- <ol style="list-style-type: none"> a. The statutory requirements b. The current Policy c. Adjoining Council policies d. School start age research and impact on partnerships e. The effect of any change to policy 7. To formulate recommendations for consideration by the Executive Board.

Scope of the review	<p>This review will focus on the provision of Carmarthenshire's early years education and play opportunities.</p>
How it will contribute to achieving corporate / community objectives and well-being objectives	<p>Contributes to the following outcomes from the County Council's Corporate Strategy 2015-20:</p> <ul style="list-style-type: none"> • Providing services as efficiently as possible, ensuring value for money... • Investigating and developing new ways of working and providing services • Working in collaboration with other organisations to identify areas for shared services and economies of scale to reduce running costs • Increasing collaboration with our partners and communities in order support the delivery of services • Strengthening the position of the Welsh language in Carmarthenshire by implementing the recommendations of the 'Welsh Language in Carmarthenshire' report • Supporting disadvantaged children and families to build their resilience with early intervention through targeted intervention programmes such as Flying Start, Families First and Communities First and embedding this practice within our core services • Ensuring continuous improvement in education outcomes for all children and young people across all learning phases • Protecting and safeguarding children and adults from harm • Supporting children, young people and families at times when they are facing challenging circumstances and enabling them to build their resilience to cope in the future • Being good corporate parents to children and young people who come into the care of the Authority <p>This project will link directly to the following Carmarthenshire County Council Well-being objectives:-</p> <ul style="list-style-type: none"> • Help to give every child the best start in life and improve their early life experiences • Help children live healthy lifestyles • Continue to improve learner attainment for all • Reduce the number of young adults that are Not in Education, Employment or Training • Support good connections with friends, family and safer communities • Promote Welsh Language and Culture <p>Delivering the Carmarthenshire County Council Moving Forward in Carmarthenshire: the next 5-years specifically objectives-</p> <p>28. Continue to improve outcomes for all pupils with a particular emphasis on raising the achievements of pupils entitled to free school meals and looked after children.</p> <p>36. Review all school pupil admission dates and age-ranges across the County.</p>

	41. Ensure the Council fully responds and delivers key childcare and play requirements moving towards delivering 30 hours of free education and care for working parents.
List of key stakeholders [not exhaustive]	<ul style="list-style-type: none"> • Education and Children's Services Officers • School Strategy and Budget Forum • School Staff • Non-maintained Sector and Private providers • School Governors • Democratic Services (information on how often reported from Elected Members) • Other as identified
What information / documents are required to inform the work of the study? [not exhaustive]	<ul style="list-style-type: none"> • Current Statutory Guidance • Foundation Phase Outcomes • School Organisation Code
Timescale for completion of the review	

EDUCATION & CHILDREN SCRUTINY COMMITTEE 14TH MARCH 2018

EXPLANATION FOR NON-SUBMISSION OF SCRUTINY REPORT

ITEM	RESPONSIBLE OFFICER	EXPLANATION	REVISED SUBMISSION DATE
ALN Reform Including SEN	Andi Morgan	Mr Huw Davies has recently taken up post as the Additional Learning Needs (ALN) Transformation Lead for the ERW footprint. He is meeting with key officers on the 6 th of March to discuss ALN and ALN provision in the LA, Engagement with ALN reform and Innovation funding. We will be better placed following this meeting to present a report to Scrutiny.	April 23rd

Mae'r dudalen hon yn wag yn fwriadol

EXPLANATION FOR NON-SUBMISSION OF SCRUTINY REPORT

SCRUTINY COMMITTEE : Education & Children

DATE OF MEETING : 14th March

ITEM	RESPONSIBLE OFFICER	EXPLANATION	REVISED SUBMISSION DATE
Quarter 3 Performance Management Report for the Council's 2017/18 Wellbeing Objectives	David Astins, Strategic Development Manager	Work on this is ongoing and the report will be submitted to the next meeting.	23 rd April 2018

Mae'r dudalen hon yn wag yn fwriadol

EDUCATION & CHILDREN SCRUTINY COMMITTEE 14TH MARCH 2018

FORTHCOMING ITEMS FOR NEXT MEETING 23RD APRIL 2018

Discussion Topic	Background
ERW Business Plan 2017/18 & Review of 2016/17 (including update on curriculum changes)	This item will provide members with an overview of the nature and depth of our partnership working with ERW and its impact on provision and standards across our schools. The Business Plan outlines all key areas of regional working. Discussion will demonstrate how this links directly to school improvement activity within our LA.
Corporate Parenting & Safeguarding Panel Annual Report 2017	Annual Report outlining local authority activity and performance in line with the Corporate Parenting Strategy and subsequent action plan.
Welsh in Education Strategic Plan (WESP) (including pupils transferring from Welsh medium primary to Welsh medium secondary schools)	The report will update members as to progress with the WESP agenda within Carmarthenshire, as conditioned by the prevailing, and evolving, National picture.
Fostering Annual Report	To provide under statutory requirements the quality of care annual fostering report to enable members to scrutinise and consider performance as a service within the local authority.
Q3 Performance Monitoring Report	Routine report to allow Members to scrutinise Departmental performance against the commitments set out in the Council's Improvement Plan

Mae'r dudalen hon yn wag yn fwriadol

DYDD IAU, 25AIN IONAWR, 2018

YN BRESENNOL: Y Cynghorydd D. Price [Cadeirydd]

Y Cynghorwyr:

L.R. Bowen, K.V. Broom, I.W. Davies, R.E. Evans (yn lle E.G. Thomas), J.P. Jenkins, D. Jones, M.J.A. Lewis, S. Najmi, E.M.J.G. Schiavone, B. Thomas a D.T. Williams

Mrs V. Kenny – Cynrychiolydd o'r Eglwys Gatholig Rufeinig

Hefyd yn bresennol:

Y Cynghorydd G. Davies, Aelod o'r Bwrdd Gweithredol dros Addysg & Phlant

Hefyd yn bresennol fel sylwedydd:

Councillor J. Prosser

Yr oedd y swyddogion canlynol yn gwasanaethu yn y cyfarfod:

Mr G. Morgans	-	Cyfarwyddwr Gwasanaethau Addysg & Phlant
Mr A. Morgan	-	Pennaeth Gwasanaethau Addysg
Mr A. Rees	-	Pennaeth y Cwricwlwm & Lles
Mr D. Astins	-	Rheolwr Datblygu Strategol
Mr S. Davies	-	Rheolwr Gwasanaethau Moderneiddio
Mr M. Morden	-	Rheolwr Trawsnewid Dysgu
Mrs M. Evans Thomas	-	Prif Swyddog Gwasanaethau Democrataidd

Y Siambr, Neuadd y Sir, Caerfyrddin : 10.00 a.m. - 1.00 p.m.

1. YMDDIHEURIADAU AM ABSENOLDEB

Derbyniwyd ymddiheuriadau am absenoldeb gan y Cynghorwyr B. Jones, G. Jones ac E.G. Thomas; Mrs Jean Voyle-Williams (Cynrychiolydd yr Eglwys yng Nghymru) a Mrs Kate Hill a Mrs Alex Pickles (Aelodau Rhiant-lywodraethwyr)

2. DATGANIADAU O FUDDIANNAU PERSONOL

Y Cynghorydd	Rhif y Cofnod(ion)	Y Math o Fuddiant
Y Cynghorydd D. Price	Cofnod Rhif 10 – Cynnig y Rhaglen Moderneiddio Addysg i Gynyddu Nifer Lleoedd Ysgol Gynradd Gymunedol Gors-las o 110 i 210	Ef yw'r Aelod Lleol ac mae'n aelod o Gyngor Cymuned Gors-las sydd mewn trafodaethau â'r Cyngor Sir ynghylch y safle.

3. DATGAN CHWIPAIAD SYDD WEDI EU GWAHARDD.

Ni chafwyd dim datganiadau ynghylch chwipiaid y pleidiau.

4. CWESTIYNAU GAN Y CYHOEDD

Dywedodd y Cadeirydd nad oedd dim cwestiynau wedi dod i law gan y cyhoedd.

5. ADRODDIAD PERFFORMIAD & CHYRHAEDDIAD YSGOLION 2016/17

Bu'r Pwyllgor yn ystyried Adroddiad Perfformiad a Chyflawniad Ysgolion ar gyfer 2016/17 a ddarparodd drosolwg ar y meysydd allweddol isod ynghylch darpariaeth ysgolion a chyflawniad disgyblion:-

- Data perfformiad meintiol a data presenoldeb ysgolion;
- Barn ansoddol allanol (Estyn);
- Cyflawniadau o ran gwerthoedd a sgiliau yn ysgolion Sir Gaerfyrddin.

Codwyd y cwestiynau/sylwadau canlynol wrth drafod yr adroddiad:-

- Cyfeiriwyd at y ffaith bod y data'n anodd iawn ei ddadansoddi ac esboniodd Pennaeth y Gwasanaethau Addysg fod data pellach ar gael a allai fod o gymorth wrth ddeall y ffigurau;
- Cyfeiriwyd at y datganiad yn yr adroddiad sy'n nodi bod y data'n dangos cynnydd sylweddol mewn absenoldeb oherwydd salwch disgyblion, a gofynnwyd i'r swyddogion a oedd y data hwn yn awgrymu bod yna fwy o salwch yng Nghymru nag unrhyw wlad arall. Esboniodd Pennaeth y Gwasanaethau Addysg fod angen bod yn ofalus wrth ddarllen y data ynghylch absenoldeb salwch. Gallai cynnydd bach yn y ganran gael effaith sylweddol ar y darlun cenedlaethol. Gall hefyd fod yn anodd sicrhau presenoldeb da i bob plentyn, ond rydym yn ennill tir o ran ein prosesau mewn partneriaeth â'r Gwasanaeth Llesiant Addysg heb orfod erlyn bob tro. Mae Pennaethiaid Ysgol yn fodlon ar y dull a ddefnyddir gan y sir a phwysleisiodd y Cyfarwyddwr Addysg a Gwasanaethau Plant ei bod yn hanfodol bod pob pennaeth yn gyson yn y modd y mae'n ymdrin â cheisiadau am wyliau yn ystod y tymor. Dywedodd wrth y Pwyllgor ei fod yn falch bod cynnydd yn cael ei wneud;
- Tynnwyd sylw at y ffaith y caiff cofrestrau ysgol eu cau am 9.00am ac y bydd unrhyw ddisgybl sy'n cyrraedd ar ôl hyn yn cael ei gofnodi'n absennol. Mynegwyd pryder bod hyn yn anodd mewn ardaloedd gwledig a bod angen rhagor o gysondeb;
- Cyfeiriwyd at darged lefel 2 cynhwysol Cyfnod Allweddol 4 ar gyfer 2017/18 sef 65.2%, a gofynnwyd i'r swyddogion a oedd hyn yn gyraeddadwy gan ystyried ein sefyllfa bresennol. Cytunodd Pennaeth y Gwasanaethau Addysg fod y targed o 65.2% yn heriol a chytunodd y dylai gael ei adolygu ac y byddai hynny'n digwydd, yn seiliedig ar drefniadau arholi cenedlaethol diwygiedig;
- Gofynnwyd i'r swyddogion sut y gellir mynd i'r afael â'r diffyg cynnydd yn y Cyfnod Sylfaen ac a yw hyn yn gysylltiedig â'r problemau o ran llenwi swyddi mewn ysgolion cynradd. Esboniodd Pennaeth y Gwasanaethau Addysg nad oedd ateb pendant. Mae recriwtio i'r proffesiwn yn parhau i fod yn her yn genedlaethol. Ychwanegodd ei bod yn bwysig ystyried a yw asesiadau athrawon yn cael eu cynnal mewn modd cyson ledled Cymru, yn ogystal â sut y gwneir hyn. Mae llawer o waith wedi'i wneud i gryfhau hyn. Rydym bellach yn wynebu cyfnod o sicrhau ein bod yn rhoi mwy o bwyslais ar fesur 'cynnydd disgyblion' dros amser. Mae'r Swyddog Cyfnod Sylfaen yn gweithio'n uniongyrchol gydag ysgolion er mwyn cefnogi anghenion lleol

a sicrhau ein bod yn canolbwyntio ar y meysydd iawn. Mae Sir Gaerfyrddin hefyd yn annog cydweithio 'ysgol i ysgol' er mwyn cefnogi hyn a meysydd gweithgarwch eraill.

PENDERFYNWYD derbyn yr adroddiad.

6. PAPUR CYD-DESTUNOL ARWEINYDDIAETH A DATA YSGOLION - 2016/17

Bu'r Pwyllgor yn ystyried Papur Cyd-destunol Arweinyddiaeth Ysgolion 2016/17, a amlinellodd rai o'r heriau y mae ein hysgolion a'r Gwasanaeth Addysg yn eu hwynebu ar hyn o bryd, a rhoddodd drosolwg ar ddata cyd-destunol o ran ysgolion a threfniadau arwain fel a ganlyn:-

(1) Ystadegau ysgolion

- (a) Nifer yr ysgolion/disgyblion
- (b) Nifer y disgyblion (Cymru)
- (c) Nifer y disgyblion mewn ysgolion Cymraeg
- (d) Nifer yr athrawon/staff cymorth (CALL)
- (e) Prydau ysgol am ddim (yr holl ddisgyblion)
- (f) Prydau ysgol am ddim (5-15 oed)
- (g) Anghenion Dysgu Ychwanegol
- (h) Absenoldeb (cynradd)
- (i) Absenoldeb (uwchradd)
- (j) Cronfeydd ariannol wrth gefn
- (k) NEET (pobl nad ydynt mewn addysg, cyflogaeth na hyfforddiant)

(2) Ôl troed Ffederasiwn Ysgolion

(3) Ôl troed Arweinyddiaeth/Pennaeth Dros Dro

Codwyd y cwestiynau/sylwadau canlynol wrth drafod yr adroddiad:-

- Gofynnwyd i'r swyddogion am yr oedi o ran diwallu anghenion addysgol arbennig ar gyfer plant ar ôl i'r angen gael ei nodi. Esboniodd Pennaeth y Gwasanaeth Addysg fod y tîm yn ymateb yn gyflym i unrhyw angen a nodir a bod unrhyw oedi yn tueddu i fod o natur benodol. Mae cynnydd pob ysgol yn cael ei fonitro ac mae Swyddogion Cyswllt â'r Teulu yn gweithio er mwyn cynorthwyo ysgolion, teuluoedd a phlant;
- Pan ofynnwyd iddo a oedd unrhyw dueddiadau amlwg yn y data, dywedodd y Cyfarwyddwr Addysg a Gwasanaethau Plant wrth y Pwyllgor mai un o'r tueddiadau a welwyd yng Nghaerfyrddin dros y pum mlynedd diwethaf yw'r lleihad yn nifer y plant sydd â datganiad. Mae 500 yn llai o blant â datganiad oherwydd y cymorth ychwanegol a roddir i ysgolion;
- Pan ofynnwyd i Bennaeth y Gwasanaethau Addysg sut mae anghenion a hyfforddiant yn cael eu nodi, esboniodd fod yr Awdurdod yn gweithio'n agos iawn gyda'r Rhaglen Cynnydd a bod swyddogion yn ymyrryd lle bo angen. Ychwanegodd y Rheolwr Trawsnewid Dysgu fod yna gyfrifoldeb ar yr Awdurdod Lleol i ddatblygu rhaglen o gamau, y Fframwaith Ymgysylltu ag leuenctid, mewn partneriaeth â sefydliadau gwirfoddol. Mae'r Prosiect Cymorth hefyd yn cynnig ystod o ymyriadau lle gellir nodi pobl ifanc yn CA3, CA4 a'r rhai sydd wedi gadael yr ysgol er mwyn dilyn eu cynnydd ac ymgysylltu â nhw;

- Mynegwyd pryder y gallai fod yna ormod o ysgolion yn Sir Gaerfyrddin a bod hyn felly'n cael effaith ar y gyllideb. O gofio hyn, gofynnwyd i'r swyddogion beth oedd y bwriad o ran y ffedereiddio gan fod dim ond pedwar ffederasiwn ffurfiol yn y sir. Esboniodd y Cyfarwyddwr Addysg a Gwasanaethau fod hyn yn destun pryder i'r swyddogion oherwydd bod staff yn wynebu nifer o heriau a phwysau o ran gweinyddu 98 o ysgolion cynradd, ac nid yw rhai ohonynt yn gallu gweithredu o fewn y gyllideb a ddyrannwyd iddynt. Roedd y swyddogion yn gweithio i lunio adroddiad i fynd i'r afael â'r her hon a fydd yn cael ei gyflwyno i'r Bwrdd Gweithredol ei ystyried. Pwysleisiodd fod rhaid i swyddogion ystyried pob opsiwn posibl cyn penderfynu cau ysgol;
- Mynegwyd pryder am y trafferthion wrth recriwtio penaethiaid a fydd yn cael eu dwysáu oherwydd nifer y penaethiaid a fydd yn ymddeol dros y blynnyddoedd nesaf. Rhoddodd Pennaeth y Gwasanaethau Addysg wybod i'r Pwyllgor fod 16 o athrawon yn ymgymryd â rhaglen Cymhwyster Proffesiynol Cenedlaethol ar gyfer Prifathrawiaeth ar hyn o bryd, a'r gobaith yw y byddant yn graddio ddiwedd mis Chwefror. Mae hon yn nifer addawol yn Sir Gaerfyrddin ac mae'n argoeli'n dda ar gyfer ein prosesau cynllunio ar gyfer olyniaeth. Mae'r rhaglen CPCP wedi cael ei mireinio a'i gwella. O hyn ymlaen, y gobaith yw y bydd dwy garfan yn graddio bob blwyddyn a bydd hynny'n sicrhau bod gennym ddigon o ddarpar benaethiaid sydd â'r cymwysterau priodol ym 'manc' penaethiaid Sir Gaerfyrddin. Cyfaddefodd fod recriwtio penaethiaid mewn ysgolion uwchradd yn parhau i fod yn heriol. Mae'r Awdurdod yn cymryd rhan mewn cynllun peilot Rheolwyr Busnes Ysgolion Llywodraeth Cymru, sydd â'r nod o ddatblygu mwy o arferion effeithiol yn ein hysgolion gan gael gwared ar lwyth gwaith diangen y Pennaeth.

PENDERFYNWYD

6.1 Bod yr adroddiad yn cael ei dderbyn;

6.2 Bod adroddiad yn cael ei gyflwyno mewn cyfarfod y Pwyllgor yn y dyfodol, ynghylch y camau y mae'r Awdurdod yn eu cymryd er mwyn denu mwy o bobl i swyddi athrawon a denu mwy o athrawon i ddatblygu i fod yn benaethiaid.

7. DIWEDDARIAD ADOLYGIAD CWRICWLWM 11-19 SIR GAERFYRDDIN

Rhoddwyd gwybod i'r Pwyllgor y cynhaliwyd Adolygiad Cwricwlwm 11–19 Sir Gaerfyrddin yn ystod blwyddyn academiaidd 2015/16 yn dilyn ymgynghoriad helaeth ag aelodau staff yr Awdurdod Lleol, yr ysgolion uwchradd, Coleg Sir Gâr ac ystod o sefydliadau allanol gan gynnwys Llywodraeth Cymru.

Yn dilyn yr ymgynghoriad, ystyriodd Adolygiad Cwricwlwm 11–19 Sir Gaerfyrddin gan y Pwyllgor Craffu - Addysg a Phlant ar 17 Mehefin 2016, a chymeradwywyd gan y Bwrdd Gweithredol ar 17 Hydref 2017.

Ers i'r adolygiad gael ei gymeradwyo, mae swyddogion wedi bod yn blaenoriaethu ystod o gamau sy'n gysylltiedig â'r argymhellion yn y ddogfen a rhoddwyd y wybodaeth ddiweddaraf am y gwaith a wnaed yn y cynllun gweithredu.

PENDERFYNWYD derbyn yr adroddiad.

8. Y RHAGLEN MODERNEIDDIO ADDYSG - ADRODDIAD CYNNYDD HYD AT RAGFYR 2017

Bu'r Pwyllgor yn ystyried adroddiad cynnydd y Rhaglen Moderneiddio Addysg a oedd yn cynnwys y wybodaeth ddiweddaraf hyd at fis Rhagfyr 2017 ar gyfer Band A a chyflymu'r cynlluniau Band B Ysgolion yr 21ain Ganrif.

Ar hyn o bryd, mae gan 69% o'r prosiectau (11 allan o 16) gymeradwyaeth Achos Busnes Llawn Llywodraeth Cymru. Roedd tua 48% (£20.6m) o'r cyllid Band A wedi'i hawlio a'i gwario erbyn diwedd blwyddyn ariannol 2016/17.

Roedd rhai o'r prosiectau a oedd yn cael eu datblygu ym Mand A yn achosi pryder o ganlyniad i rai materion mewn perthynas â'r prosesau statudol cymhleth a'r ffaith bod y cyhoedd yn gwrthwynebu'r safleoedd a ffeirir. Bydd cyhoeddiad diweddar Llywodraeth Cymru ynghylch adolygu Côt Trefniadaeth Ysgolion i gynnwys rhagdybiaeth yn erbyn cau ysgolion gwledig yn golygu y bydd cwblhau prosesau statudol yn fwy anodd ac yn cymryd mwy o amser, gan y bydd angen i Awdurdodau Lleol ddangos eu bod wedi ystyried pob opsiwn ffedereiddio cyn cynnig aildrefnu. Mae rhai ysgolion a nodwyd yn rhai gwledig yn yr ymgynghoriad ynghylch y Côt Trefniadaeth Ysgolion newydd wedi'u cynnwys mewn prosiect sydd ym Mand A ar hyn o bryd.

Er mwyn lleihau'r risg o oedi, mae prosiectau a nodir ym Mand B y Rhaglen Moderneiddio Addysg yn cael eu datblygu'n gynnar pe deuid i'r gasgliad na fydd prosiectau Band A yn gallu hawlio grant Llywodraeth Cymru erbyn mis Mawrth 2019.

Codwyd y cwestiynau canlynol wrth drafod yr adroddiad:-

- Cyfeiriwyd at y ffaith bod cyllid wedi'i ddyrannu ar gyfer y rhaglen am ddwy flynedd ychwanegol a gofynnwyd i'r swyddogion a ydynt yn hyderus y bydd arian ar gael yn y gyllideb ar ôl hynny. Esboniodd Rheolwr y Gwasanaethau Moderneiddio fod y proffil Band A yn cael ei ariannu'n llwyr gan y rhaglen gyfalaf a bod achosion busnes yn cael eu cyflwyno i Lywodraeth Cymru am grant arian cyfatebol. Mae yna ychydig o arian cyfatebol yn y rhaglen gyfalaf 5 mlynedd ar gyfer Band B, a fydd yn mynd ymlaen ar sail cymeradwyo'r achos busnes, fel Band A.

PENDERFYNWYD derbyn yr adroddiad.

9. Y RHAGLEN MODERNEIDDIO ADDYSG - CYNNIG I DDARPARU DARPARIAETH FEITHRIN YN YSGOL PARC-Y-TYWYN DRWY GYNYDDU YR YSTOD OEDRAN O 4-11 I 3-11

Yn y cyfarfod ar 28 Medi 2017, (gweler Cofnod 14), ystyriodd y Pwyllgor adroddiad a oedd yn nodi manylion y cynnig i safoni darpariaeth addysg feithrin yr Awdurdod Lleol yn ardaloedd Porth Tywyn a Phen-bre.

Cynhaliwyd cyfnod ymgynghori rhwng 6 Tachwedd a 17 Rhagfyr 2017 ynghylch y cynnig i ddarparu addysg feithrin yn Ysgol Parc-y-Tywyn drwy gynyddu ei hystod oedran o 4-11 i 3-11, a chyflwynodd y canlyniadau i'r Pwyllgor eu hystyried.

Codwyd y cwestiynau/sylwadau canlynol wrth drafod yr adroddiad:-

- Cyfeiriwyd at y ffaith y bydd y cynnig hwn yn effeithio ar rai o'r darparwyr preifat a gofynnodd y Cylch Meithrin a ellid ei symud i'r ysgol newydd. Esboniodd y Cyfarwyddwr Addysg a Gwasanaethau Plant y bydd yr ysgol yn darparu ei haddysg feithrin ei hun, ond mae cais wedi'i gyflwyno i gynnal cynllun peilot o'r ddarpariaeth 30 awr fel y bydd yna gyfleoedd i ddarparwyr weithio gyda'n hysgolion i ddiwallu'r angen hwnnw. Mae'r effaith ar ddarparwyr preifat wedi'i chydabod ac mae'r swyddogion yn gweithio gyda nhw er mwyn gwella'r sefyllfa.
-

PENDERFYNWYD

- 9.1 Nodi'r sylwadau a ddaeth i law yn dilyn y cyfnod ymgynghori ac ymatebion yr Awdurdod Lleol iddynt;
- 9.2 Cymeradwyo'r Bwrdd Gweithredol y cyhoeddiad Hysbysiad Statudol i weithredu'r cynnig i ddarparu addysg feithrin yn Ysgol Parc-y-Tywyn drwy gynyddu ei hystod oedran o 4-11 i 3-11.

10. Y RHAGLEN MODERNEIDDIO ADDYSG - CYNNIG I GYNYDDU NIFER Y LLEOEDD YN YSGOL GYMUNEDOL GORSLAS O 110 I 210

[NODER: Roedd y Cynghorydd D. Price, y Cadeirydd, wedi datgan buddiant yn yr eitem hon yn gynharach, ond nid oedd yn bwriadu sôn am y mater.]

Yn y cyfarfod ar 28 Medi 2017 (gweler Cofnod 13), ystyriodd y Pwyllgor adroddiad a oedd yn nodi manylion y cynnig i gynyddu nifer lleoedd Ysgol Gynradd Gymunedol Gors-las o 110 i 210.

Cynhaliwyd ymarfer ymgynghori ffurfiol rhwng 6 Tachwedd a 17 Rhagfyr 2017 ynghylch y cynnig, a chyflwynodd y canlyniadau i'r Pwyllgor eu hystyried.

PENDERFYNWYD

- 9.1 Nodi'r sylwadau a ddaeth i law yn dilyn y cyfnod ymgynghori ac ymatebion yr Awdurdod Lleol iddynt;
- 9.2 Cymeradwyo'r Bwrdd Gweithredol y cyhoeddiad Hysbysiad Statudol i weithredu'r cynnig i gynyddu nifer y lleoedd yn Ysgol Gymunedol Gors-las o 110 i 210.

11. DIWEDDARAF AM WEITHREDIADAU AC ATGYFEIRIADAU'R PWYLLGOR CRAFFU ADDYSG & PHLANT

Cafodd y Pwyllgor adroddiad yn cynnwys manylion am y cynnydd a wnaed mewn perthynas â'r camau, ceisiadau, neu atgyfeiriadau a gododd o gyfarfodydd ers 28 Medi 2017.

PENDERFYNWYD YN UNFRYDOL dderbyn yr adroddiad.

12. EITEMAU AR GYFER Y DYFODOL

Dywedodd y Cadeirydd yr awgrymwyd bod Chwarae ac Addysg Blynnyddoedd Cynnar yn bwnc delfrydol, ar ôl iddo ofyn i aelodau argymhell pynciau posibl ar gyfer adolygiad y Grŵp Gorchwyl a Gorffen. Byddai adroddiad yn cael ei gyflwyno yn y cyfarfod nesaf ynghylch sefydlu'r Grŵp Gorchwyl a Gorffen a fyddai'n cynnwys maes gorchwyl, cwmpas, aelodaeth ac ati.

PENDERFYNWYD nodi'r rhestr o eitemau ar gyfer y dyfodol a oedd i'w hystyried yn y cyfarfod nesaf ar ddydd Mercher, 14 Mawrth 2018, a fydd yn cynnwys adroddiad ynghylch sefydlu Grŵp Gorchwyl a Gorffen.

13. COFNODION

13.1. 27AIN TACHWEDD, 2017

PENDERFYNWYD YN UNFRYDOL lofnodi cofnodion cyfarfod y Pwyllgor oedd wedi ei gynnal ar 27ain Tachwedd, 2017 gan eu bod yn gywir.

13.2. 21AIN RHAGFYR, 2017

PENDERFYNWYD YN UNFRYDOL lofnodi cofnodion cyfarfod y Pwyllgor oedd wedi'i gynnal ar 21ain Rhagfyr, 2017 gan eu bod yn gywir.

CADEIRYDD

DYDDIAD

Mae'r dudalen hon yn wag yn fwriadol